



**HAL**  
open science

# Error estimation and model adaptation for a stochastic-deterministic coupling method based on the Arlequin method

Cédric Zaccardi, Ludovic Chamoin, Régis Cottereau, Hachmi Ben Dhia

► **To cite this version:**

Cédric Zaccardi, Ludovic Chamoin, Régis Cottereau, Hachmi Ben Dhia. Error estimation and model adaptation for a stochastic-deterministic coupling method based on the Arlequin method. International Journal for Numerical Methods in Engineering, 2013, 96 (2), pp.87-109. 10.1002/nme.4540 . hal-00869049

**HAL Id: hal-00869049**

**<https://centralesupelec.hal.science/hal-00869049v1>**

Submitted on 2 Oct 2013

**HAL** is a multi-disciplinary open access archive for the deposit and dissemination of scientific research documents, whether they are published or not. The documents may come from teaching and research institutions in France or abroad, or from public or private research centers.

L'archive ouverte pluridisciplinaire **HAL**, est destinée au dépôt et à la diffusion de documents scientifiques de niveau recherche, publiés ou non, émanant des établissements d'enseignement et de recherche français ou étrangers, des laboratoires publics ou privés.

# Error estimation and model adaptation for a stochastic-deterministic coupling method based on the Arlequin framework

C. Zaccardi<sup>1,2</sup>, L. Chamoin<sup>2\*</sup>, R. Cottreau<sup>1</sup>, H. Ben Dhia<sup>1</sup>

<sup>1</sup> MSSMat UMR 8579, École Centrale Paris/CNRS, Grande Voie des Vignes, 92295 Châtenay-Malabry Cedex, France

<sup>2</sup> LMT-Cachan, ENS Cachan/CNRS/Paris 6 University, 61 avenue du Président Wilson, 94235 Cachan Cedex, France

## SUMMARY

The paper deals with the issue of accuracy for multiscale methods applied to solve stochastic problems. It more precisely focuses on the control of a coupling, performed using the Arlequin framework, between a deterministic continuum model and a stochastic continuum one. Using residual-type estimates and adjoint-based techniques, a strategy for goal-oriented error estimation is presented for this coupling and contributions of various error sources (modeling, space discretization, and Monte Carlo approximation) are assessed. Furthermore, an adaptive strategy is proposed to enhance the quality of outputs of interest obtained by the coupled stochastic-deterministic model. Performance of the proposed approach is illustrated on 1D and 2D numerical experiments.

**KEY WORDS:** Multiscale methods, Stochastic Mechanics, Arlequin method, Goal-oriented error estimation, *a posteriori* error estimation

## 1. INTRODUCTION

Numerical simulation has become an essential tool in design processes, providing for more flexibility and reduced production costs. Recent advances in this field include the development and consideration of multiscale and stochastic models. Multiscale models, on the one hand, aim at introducing appropriate models at each of the scales considered in a general problem and coupling them together. Stochastic models, on the other hand, aim at explicitly taking into account data uncertainties and modeling variabilities, which traditionally limit the predictability of deterministic numerical models. Such stochastic multiscale models, and the control of their accuracy, form the subject of the present paper.

We assume that there exists, for the study of a structure, a hierarchy of models defined at different scales. While coarse models might yield effective results for the average response of the structure under distributed loading, these models may become ineffective when a localized defect arises (crack, hole, local weakness), or when one is interested in local quantities. Finer-scale models are then required, but usually involve higher computational costs, which renders their use unrealistic for industrial structures. The general idea of multiscale modeling is then to get around this dilemma by considering a coarse model wherever possible, while refining it locally around the zone of interest. Various multiscale strategies have been developed: (i) enrichment methods [1, 2] in the Finite Element Method (FEM) framework, in which appropriate fine-scale basis functions are used around local defects; (ii) splitting methods [3, 4, 5, 6] in which the solution field is split additively into a coarse field and a finer-scale field, each being solved at its own scale, with fictitious boundary conditions at the lower scale; and (iii) superposition methods [7, 8, 9], in which both coarse and fine-scale models coexist in the local subdomain of interest and are solved concurrently by enforcing the matching of their solutions in an appropriate weak sense on an overlapping region. Extensions of these multiscale strategies to stochastic models have been proposed in the context of the heterogeneous multiscale method [10], the multiscale finite element method [11] and of the Arlequin method [12, 13]. The latter is a superposition method that has been applied to the

---

\*Correspondence to: chamoin@lmt.ens-cachan.fr

coupling of various models in the past decade (see [7, 14, 15, 16, 9, 17, 18, 19, 20], among others), and on which we will concentrate in this paper [21, 13].

The purpose of stochastic multiscale modeling is to provide reliable results for engineering problems, with explicit account of data uncertainties and modeling variabilities at reasonable computational cost. However, to reach that goal, the numerical errors associated to their solution must be evaluated and controlled. For more than thirty years, and particularly in the context of the FEM, *a posteriori* error estimators have been proposed (see [22, 23, 24] for reviews). These techniques allow to complement FE solutions with an estimation of their accuracy. After initial works on global error estimators, based on global energy norms of the solution, goal-oriented error estimators have been developed [25, 26, 27] in order to assess the accuracy of specific outputs of interest (for example: stress average in a given zone, or displacement of a point). While most of the studies on error estimation are concerned with monoscale models, some specific developments have been proposed for coupled multi-scale models. In particular, in the Arlequin framework, several papers have dealt with the evaluation and control of the accuracy of coupled atomistic and continuum models assessing both discretization and modeling errors, in the deterministic case [18, 28, 29]. A preliminary work has also been presented in the context of atomistic-continuum stochastic models [12], but using a different type of coupling from that considered in the present paper.

The main objective of the paper is to develop a framework for goal-oriented error estimation when the Arlequin method is used to couple deterministic and stochastic models, as developed in [21, 13]. To control the quality of approximate local quantities, we use residual-type estimates and classical adjoint-based techniques to get bounds on the local error. A second objective of the paper is to propose a method to split the different error sources, *i.e.* modeling error, spatial discretization error, and stochastic error. The splitting is based on the introduction of intermediate reference models and on the construction of error estimates with respect to these new models, following [24, 30, 31]. The idea of evaluating and controlling modeling errors, independently of the discretization errors, was already discussed in [5, 32, 33, 28, 29] by comparing, in some adequate manner, the solutions obtained for the same problem evaluated at different scales. Extension to stochastic problems of such methodologies is, to the best of our knowledge, the first of its kind. This separation of sources enables to adapt the Arlequin model effectively by choosing, in a greedy manner, parameters of the numerical model that lead to the computation of the output of interest within a prescribed accuracy.

The paper is organized as follows. Section 2 introduces the reference (stochastic) model and its approximation in the context of the multiscale Arlequin method. In Section 3, which deals with the first objective of the paper, the framework for goal-oriented error estimation as applied to the stochastic-deterministic Arlequin coupling is introduced. In Section 4, we address the second objective of the paper. We propose a technique to split the error into different error sources based on the introduction of intermediate models, and we set up the associated adaptive modeling process. Finally, numerical examples are presented in Section 5, in order to discuss key numerical issues and illustrate the effectiveness of the error estimates for adaptive modeling purposes. Conclusions are drawn in Section 6.

## 2. REFERENCE MODEL AND APPROXIMATE ARLEQUIN FORMULATION

In this section, we describe the different models used in this paper. The reference monomodel is a continuum stochastic linear elliptic boundary value problem. This model is approximated using the Arlequin method to yield a surrogate problem, called the coupled model, in which a continuum deterministic model and a stochastic one interact with each other.

### 2.1. Reference monomodel

We consider here a stochastic linear elliptic Poisson problem representing a wide range of physical applications (heat equation, membrane, Darcy equation). The problem is defined over an open bounded domain  $\Omega$  with boundary  $\partial\Omega$ , split into  $\Gamma_D$  and  $\Gamma_N$  such that  $\partial\Omega = \overline{\Gamma_D \cup \Gamma_N}$  (see Fig. 1). Considering  $(\Theta, \mathcal{F}, P)$  a complete probability space with  $\Theta$  a set of outcomes,  $\mathcal{F}$  a  $\sigma$ -algebra of events, and  $P : \mathcal{F} \rightarrow [0, 1]$  a probability measure, the problem reads:

find  $u$  such that:

$$\nabla \cdot (K(x, \theta) \nabla u(x, \theta)) + f(x) = 0, \text{ almost everywhere (a.e.) in } \Omega, \text{ and almost surely (a.s.)}, \quad (1)$$

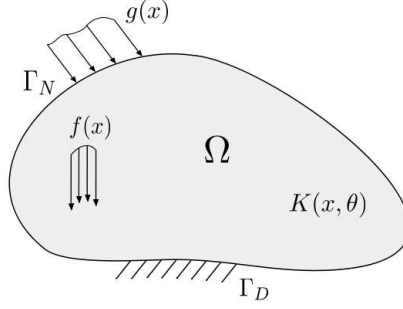


Figure 1. Reference stochastic monomodel with heterogeneous random coefficient  $K(x, \theta)$ .

with :

$$\begin{cases} u(x, \theta) = 0 & \text{a.e. on } \Gamma_D \text{ and a.s.,} \\ K(x, \theta) \nabla u \cdot \mathbf{n} = g(x) & \text{a.e. on } \Gamma_N \text{ and a.s.} \end{cases} \quad (2)$$

The stochastic behavior is driven by parameter  $K(x, \theta)$  considered here as a stochastic field,  $P$  measurable on  $\Theta \otimes B(\Omega)$  where  $B(\Omega)$  is the Borel  $\sigma$ -algebra generated by the open subsets of  $\Omega$ . We assume that  $K(x, \theta)$  is bounded and uniformly coercive [34], *i.e.* :

$$0 < K_{min} \leq K(x, \theta) \leq K_{max} < \infty, \text{ a.e. in } \Omega \text{ and a.s.}$$

We denote  $\mathcal{W}$  the functional space of admissible displacement fields as:

$$\mathcal{W} = \{v \in \mathcal{L}^2(\Theta, \mathcal{H}^1(\Omega)), v = 0 \text{ on } \Gamma_D, \text{ a.s.}\} \quad (3)$$

The weak formulation of the problem (1)-(2) reads:

Find  $u \in \mathcal{W}$  such that:

$$A(u, v) = L(v), \quad \forall v \in \mathcal{W}, \quad (4)$$

where the internal virtual work is given by the bilinear form  $A : \mathcal{W} \times \mathcal{W} \rightarrow \mathbb{R}$  and the external virtual work is given by the linear form  $L : \mathcal{W} \rightarrow \mathbb{R}$ . They are defined, respectively, by:

$$A(u, v) = \mathbb{E} \left[ \int_{\Omega} K(x, \theta) \nabla u(x, \theta) \cdot \nabla v(x, \theta) d\Omega \right],$$

and

$$L(v) = \int_{\Omega} f(x) \mathbb{E}[v(x, \theta)] d\Omega + \int_{\Gamma_N} g(x) \mathbb{E}[v(x, \theta)] d\Gamma,$$

where  $\mathbb{E}[\bullet]$  is the mathematical expectation. It can be proved that the problem described above admits a unique solution (see for example [34]). We refer to this solution as the exact solution and denote it by  $u_{ex}$ .

Let us notice that problem (4) is a continuous stochastic problem. Therefore, two classical approximations processes have to be used: one for the spatial dimension and one for the stochastic dimension. These approximations could induce high computational cost, especially with regard to the stochastic dimension. To get an accurate approximation of statistical moments of  $u_{ex}$  using a Monte Carlo approach for instance, a huge number of realizations [35] may be required, especially where critical zones have to be considered. Another method based on the polynomial chaos decomposition [36, 34] can also be followed but the size of the matrix which has to be inverted can increase dramatically. In practice, due to the problem size, surrogate problems derived from this reference model are used. In the next paragraph, we present a family of surrogate problems, in the context of the Arlequin approach.

## 2.2. Surrogate model using the Arlequin coupling

Here, we assume that we are interested in a local quantity of interest defined within a prescribed region  $\Omega_s \subset \Omega$ . In order to reproduce accurately the effect of randomness on this quantity, we choose to keep the stochastic description in the local zone  $\Omega_s$  only. The parameter  $K$  is thus kept in this area as a stochastic

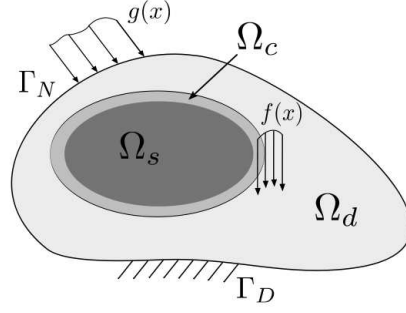


Figure 2. Arlequin description of the problem with coupling between the two models in zone  $\Omega_c$ .

field denoted by  $K_s(x, \theta)$  while it is changed to a deterministic parameter denoted by  $K_d$  in the remainder of the structure. The latter is derived from  $K$  by means of stochastic homogenization [37, 38]. In the Arlequin framework, this multi-model representation is made possible by considering a deterministic model defined over  $\Omega_d \equiv \Omega$  (called the substrate) on which we superpose a stochastic model defined over  $\Omega_s$  (called the patch). For simplicity of notation, we consider the case where the patch  $\Omega_s$  is fully embedded in  $\Omega_d$  as shown in Fig. 2. The two models are blended together in a coupling zone  $\Omega_c \subset \Omega_s$  (see Fig. 2) and the mechanical energy is distributed between the two models using weight functions  $(\alpha_d(x), \alpha_s(x))$  (see [7, 9, 21, 13] for more details). The Arlequin problem then reads:

Find  $(u_d, u_s, \lambda)$  in  $\mathcal{V}_d \times \mathcal{W}_s \times \mathcal{W}_c$  such that:

$$\begin{cases} a_d(u_d, v_d) + C(\lambda, v_d) &= \ell_d(v_d), & \forall v_d \in \mathcal{V}_d, \\ A_s(u_s, v_s) - C(\lambda, v_s) &= L_s(v_s), & \forall v_s \in \mathcal{W}_s, \\ C(\mu, u_d - u_s) &= 0, & \forall \mu \in \mathcal{W}_c, \end{cases} \quad (5)$$

where  $\mathcal{V}_d = \{v \in \mathcal{H}^1(\Omega_d), v(x) = 0 \text{ on } \Gamma_D\}$  and  $\mathcal{W}_s = \mathcal{L}^2(\Theta, \mathcal{H}^1(\Omega_s))$ . The internal and external virtual works  $a_d : \mathcal{V}_d \times \mathcal{V}_d \rightarrow \mathbb{R}$ ,  $A_s : \mathcal{W}_s \times \mathcal{W}_s \rightarrow \mathbb{R}$ ,  $\ell_d : \mathcal{V}_d \rightarrow \mathbb{R}$  and  $L_s : \mathcal{W}_s \rightarrow \mathbb{R}$  are defined, respectively, as:

$$a_d(u, v) = \int_{\Omega_d} \alpha_d(x) K_d \nabla u(x) \cdot \nabla v(x) d\Omega,$$

$$A_s(u, v) = \mathbb{E} \left[ \int_{\Omega_s} \alpha_s(x) K_s(x, \theta) \nabla u(x, \theta) \cdot \nabla v(x, \theta) d\Omega \right],$$

and

$$\ell_d(v) = \int_{\Omega_d} \alpha_d(x) f(x) v(x) d\Omega + \int_{\Gamma_N} g(x) v(x) d\Gamma,$$

$$L_s(v) = \mathbb{E} \left[ \int_{\Omega_s} \alpha_s(x) f(x) v(x, \theta) d\Omega \right].$$

The mediator space  $\mathcal{W}_c$  is built as a space of functions with a spatially varying expectation and a perfectly spatially correlated randomness:  $\mathcal{W}_c = \{\psi + \theta_c \mathbb{I}_{\Omega_c} \mid \psi \in \mathcal{H}^1(\Omega_c), \theta_c \in \mathcal{L}^2(\Theta, \mathbb{R})\}$  with  $\theta_c$  a random variable and where  $\mathbb{I}_{\Omega_c}$  is the characteristic function of  $\Omega_c$ , namely  $\mathbb{I}_{\Omega_c} = 1$  in  $\Omega_c$  and  $\mathbb{I}_{\Omega_c} = 0$  elsewhere. This mediator space has been chosen as it is the smallest one that ensures the stability of the formulation. Other possible choices included the restrictions on  $\Omega_c$  of either one of  $\mathcal{V}_d$  or  $\mathcal{W}_s$ . The former choice leads to an unstable mixed problem, and the latter leads to a waste of resources as the fine-scale solution locks onto the coarse-scale solution in the coupling area. Moreover, the specific structure of the chosen mediator space imposes implicitly that the (ensemble) average of the field  $u_s$  should be equal to the field  $u_d$ , almost everywhere in  $\Omega_c$ , and that the variability of the space average quantity  $\int_{\Omega_c} \mathbb{E}[u_s] - u_s d\Omega$  should cancel (see [13] for more details). The coupling operator  $C : \mathcal{W}_c \times \mathcal{W}_c \rightarrow \mathbb{R}$  is defined as:

$$C(u, v) = \mathbb{E} \left[ \int_{\Omega_c} (\kappa_0 uv + \kappa_1 \nabla u \cdot \nabla v) d\Omega \right],$$

where the parameters  $\kappa_0$  and  $\kappa_1$  are of the same units as a string rigidity divided by a length and a material rigidity, respectively (see [9] for details). The well-posedness of problem (5) can be found in [13].

The surrogate Arlequin problem provides two fields:  $u_d$  defined on  $\mathcal{V}_d$ , and  $u_s$  defined on  $\mathcal{W}_s$ . We additionally introduce the continuous field  $u_{arl}^c \in \mathcal{W}$  from  $u_d$  and  $u_s$  given by:

$$u_{arl}^c = \begin{cases} u_d & \text{in } \Omega_d \setminus \Omega_s, \\ \alpha_d u_d + \alpha_s u_s & \text{in } \Omega_s. \end{cases}$$

Obviously, the solution of the Arlequin model  $u_{arl}^c$  and the exact solution  $u_{ex}$  are different, even in the patch. An error is thus introduced by the consideration of the Arlequin model, even before any discretization process is introduced.

### 3. GENERAL FRAMEWORK FOR GOAL-ORIENTED ERROR ESTIMATION

The Arlequin solution presented above is an approximation of the reference monomodel solution. Its estimation through numerical techniques introduces two additional levels of approximation: a space approximation linked to the introduction of a mesh and corresponding finite element bases and one related to the stochastic dimension through the use of the Monte Carlo technique. We assume that we can construct from  $(u_d^a, u_s^a)$  a field  $u_{arl} \in \mathcal{W}$ . We then define the error as  $e = u_{ex} - u_{arl}$ .

Let us recall here that the Arlequin model is used to estimate a local quantity of interest inside the patch  $\Omega_s$ . This quantity is a function of the monomodel solution, denoted  $q(u)$ . We therefore seek to quantify the error  $\eta = q(u_{ex}) - q(u_{arl})$  using goal-oriented techniques.

In the case of deterministic Arlequin models, preliminary works dealing with goal-oriented error estimation were conducted for 1D tests [18]. With the introduction of an adjoint problem and tools for modeling error control as defined in [33], the error on a given quantity of interest was assessed. These works were extended to 2D and 3D applications in [39, 28, 29] for adaptive modeling of polymeric materials.

#### 3.1. Quantity of interest and adjoint problem

We seek to quantify the error on a quantity of interest  $q(u) : \mathcal{W} \rightarrow \mathbb{R}$  obtained with the Arlequin method. A quantity of interest could be, for example, the space average over a given subdomain of the mathematical expectation of  $u$  or of a given component of  $\nabla u$ .

The idea is to express the output of interest in the global form (see [25, 40, 33]):

$$q(u) = \mathbb{E} \left[ \int_{\Omega} f_q u \, d\Omega + \int_{\Gamma_N} g_q u \, d\Gamma + \int_{\Omega} \mathbf{p}_q \cdot \nabla u \, d\Omega \right],$$

where quantities  $f_q, g_q$  and  $\mathbf{p}_q$  are called extractors.

We then define the so-called adjoint problem, which reads in the case of a linear quantity of interest:

Find  $p \in \mathcal{W}$  such that:

$$A(v, p) = q(v), \quad \forall v \in \mathcal{W}. \quad (6)$$

In the remainder, we denote the exact solution of this problem  $p_{ex}$ . As shown below, the error  $\eta$  can then be estimated as a function of  $u_{arl}$  and  $p_{ex}$ .

#### 3.2. Error estimates

Defining the residual function  $\mathcal{R} : \mathcal{W} \times \mathcal{W} \rightarrow \mathbb{R}$  associated to (4) by:

$$\mathcal{R}(u, v) = L(v) - A(u, v), \quad (7)$$

the use of the adjoint problem provides a tool to estimate the error  $\eta$  [27] and one can easily show that:

$$\eta = \mathcal{R}(u_{arl}, p_{ex}). \quad (8)$$

Indeed, using the definitions of  $\eta$  and  $p_{ex}$ , we have:

$$\begin{aligned} \eta &= q(u_{ex}) - q(u_{arl}) \\ &= q(u_{ex} - u_{arl}) && \text{since } q \text{ is linear} \\ &= A(u_{ex} - u_{arl}, p_{ex}) && \text{thanks to Eq. (6) with } v = u_{ex} - u_{arl} \\ &= L(p_{ex}) - A(u_{arl}, p_{ex}) && \text{since } A \text{ is bilinear and } u_{ex} \text{ verifies (4)} \end{aligned}$$



which proves (8).

In the case of a nonlinear quantity of interest,  $q(u_{ex}) - q(u_{arl})$  would usually be linearized around  $u_{arl}$  by writing [41]:

$$\begin{aligned} q(u_{ex}) = q(e + u_{arl}) &= q(u_{arl}) + q'(u_{arl}, e) + o(e), \\ \Rightarrow q(u_{ex}) - q(u_{arl}) &\approx q'(u_{arl}, e) \end{aligned} \quad (9)$$

where  $o$  is the little  $o$  of the Landau notation and  $q'(u, v) = \lim_{\theta \rightarrow 0} \frac{q(u+\theta v) - q(u)}{\theta}$  is the tangent operator of  $q$  at  $u$ . The extractors  $f_q, g_q$  and  $\mathbf{p}_q$  are then defined by:

$$q'(u_{arl}, e) = \mathbb{E} \left[ \int_{\Omega} f_q(u_{arl}) e \, d\Omega + \int_{\Gamma_N} g_q(u_{arl}) e \, d\Gamma + \int_{\Omega} \mathbf{p}_q(u_{arl}) \cdot \nabla e \, d\Omega \right],$$

### 3.3. Approximation of the adjoint solution

In practice, as the adjoint problem is defined on the same space as the reference one, its solution  $p_{ex}$  is as intractable as the solution of the reference problem. It then has to be approximated by a surrogate problem. Using again the Arlequin framework, the approximate adjoint problem reads:

Find  $(p_d, p_s, p_\lambda)$  in  $\tilde{\mathcal{V}}_d \times \tilde{\mathcal{W}}_s \times \tilde{\mathcal{W}}_c$  such that:

$$\begin{cases} a_d(w_d, p_d) + C(w_d, \lambda) &= q_d(w_d), & \forall w_d \in \tilde{\mathcal{V}}_d, \\ A_s(w_s, p_s) - C(w_s, \lambda) &= q_s(w_s), & \forall w_s \in \tilde{\mathcal{W}}_s, \\ C(p_d - p_s, \mu) &= 0, & \forall \mu \in \tilde{\mathcal{W}}_c, \end{cases} \quad (10)$$

where  $\tilde{\mathcal{V}}_d, \tilde{\mathcal{W}}_s$  and  $\tilde{\mathcal{W}}_c$  can be different from  $\mathcal{V}_d, \mathcal{W}_s$  and  $\mathcal{W}_c$  respectively (see [28, 29] in the case of a deterministic coupling between continuum and discrete models). In the case studied here, under the continuum form, we have  $\tilde{\mathcal{V}}_d \equiv \mathcal{V}_d$  and  $\tilde{\mathcal{W}}_s$  may be defined over a domain  $\tilde{\Omega}_s$  which is larger than  $\Omega_s$  and included in  $\Omega$  ( $\Omega_s \subset \tilde{\Omega}_s \subset \Omega$ ). Moreover, in their discretized form, the spaces  $\tilde{\mathcal{V}}_d, \tilde{\mathcal{W}}_s$  and  $\tilde{\mathcal{W}}_c$  are chosen richer than  $\mathcal{V}_d, \mathcal{W}_s$  and  $\mathcal{W}_c$ , respectively. The number of elements that define the finite element spaces may thus be larger and the description of the stochastic dimension may be finer also (using more Monte Carlo trials for instance).

Using the FEM and Monte Carlo techniques for instance, an approximate solution can be computed for the coupled adjoint problem (10). We denote this solution  $(p_d^a, p_s^a, p_\lambda^a)$  and additionally introduce  $p_{arl}$  similarly to  $u_{arl}$ , assuming  $p_{arl} \in \mathcal{W}$ . The error on  $q$  is then approximated by:

$$\eta \approx \mathcal{R}(u_{arl}, p_{arl}), \quad (11)$$

Note here that, since we approximate  $\mathcal{R}(u_{arl}, p_{ex})$  by  $\mathcal{R}(u_{arl}, p_{arl})$ , the approximation of  $p_{arl}$  has to be more accurate than the approximation of  $u_{ex}$  by  $u_{arl}$ . This will be extensively discussed in the examples of Section 5.

### 3.4. Approximation of the residual function

To estimate the error  $\eta$ , we need to evaluate  $\mathcal{R}(u_{arl}, p_{arl}) = A(u_{arl}, p_{arl}) - L(p_{arl})$ . In practice, the fields  $u_{arl}$  and  $p_{arl}$  are approximated by the discrete fields  $u_{arl}^a$  and  $p_{arl}^a$  given by:

$$u_{arl}^a = \begin{cases} u_d^a & \text{in } \Omega_d \setminus \Omega_s, \\ u_s^a & \text{in } \Omega_s. \end{cases} \quad (12)$$

Through simple Monte Carlo sampling, and using realizations of  $p_{arl}^a$  generated by the solution of the adjoint Arlequin system (10),  $L(p_{arl}^a)$  can be easily computed. Nevertheless, the Monte Carlo estimation of  $A(u_{arl}^a, p_{arl}^a)$  involves realizations of product  $K \nabla u_{arl}^a \cdot \nabla p_{arl}^a$ . Moreover, realizations of  $K$  are not necessarily the same for the two systems. Realizations of pairs  $(K, u_{arl}^a)$  on the one hand, and  $(K, p_{arl}^a)$  on the other hand, are obtained, as described in the previous sections by solving the Arlequin systems (5) and (10), respectively. In general, we thus cannot compute directly  $A(u_{arl}^a, p_{arl}^a)$ .

We present in the following an approach to generate, from realizations obtained by solving (5), new realizations of  $u_s^a$  that correspond to the realizations of  $K$  being used for the adjoint Arlequin system (10), while following the same first- and second-order statistics of the solution  $u_s^a$  of the primal

Arlequin system (5). The field  $u_{ar}^a$  is then reconstructed using Eq. (12) and we can thus compute the term  $A(u_{ar}^a, p_{ar}^a)$ .

To simplify the presentation, we first assume that both  $K(x, \theta)$  and  $u_s^a(x, \theta)$  are Gaussian random fields. An extension to more general first-order marginal distributions will be presented at the end of this section. Also, we consider the random vectors  $\Xi$ ,  $U$  and  $P$  that correspond to the random fields  $K(x, \theta)$  and  $u_s^a(x, \theta)$  after space discretization. The objective is to generate new realizations  $\hat{U}$  of  $U$  so that we can use  $\Xi$  and  $\hat{U}$  to compute the residual. These new realizations are such that:

$$\begin{cases} \mathbb{E}[\hat{U}] = \mathbb{E}[U] := \underline{U}, \\ \mathbb{E}[(\hat{U} - \underline{U})(\hat{U} - \underline{U})^T] = \mathbb{E}[(U - \underline{U})(U - \underline{U})^T] := \text{Cov}_U, \\ \mathbb{E}[(\hat{U} - \underline{U})(\Xi - \underline{\Xi})^T] = \mathbb{E}[(U - \underline{U})(\Xi - \underline{\Xi})^T] := \text{Cov}_{U\Xi}, \end{cases} \quad (13)$$

where we have introduced notations  $\underline{U}$  and  $\underline{\Xi}$  for the expectation of  $U$  and  $\Xi$  respectively, and covariance matrices  $\text{Cov}_U$  and  $\text{Cov}_{U\Xi}$ . For latter considerations, we also introduce the auto-covariance of  $\Xi$ :  $\text{Cov}_\Xi = \mathbb{E}[(\Xi - \underline{\Xi})(\Xi - \underline{\Xi})^T]$  that is known because the stochastic model of  $K$  is given. All expectations and covariance matrices are estimated using standard statistical estimators and the original realizations of the solution of the primal Arlequin problem (5).

We introduce a unitary centered Gaussian random vector  $\Theta$  with uncorrelated components ( $\mathbb{E}[\theta_i \theta_j] = \delta_{ij}$ ) and independent from  $\Xi$ , and the vector:

$$\hat{U} = \underline{U} + \text{Cov}_{U\Xi} \text{Cov}_\Xi^{-1} (\Xi - \underline{\Xi}) + \sqrt{\text{Cov}_U - \text{Cov}_{U\Xi} \text{Cov}_\Xi^{-1} \text{Cov}_{U\Xi}^T} \Theta,$$

where the square root sign for a matrix  $C$  indicates that  $\sqrt{C} \sqrt{C}^T = C$ . Simple algebra (remembering the independence of  $\Theta$  and  $\Xi$  and  $\mathbb{E}[\Theta] = 0$ ) indicates that this random vector indeed verifies the desired first- and second-order statistics (13) sought.

As neither  $K(x, \theta)$  nor  $u_s^a(x, \theta)$  are Gaussian random fields, an isoprobabilistic approach should be followed to transform the original fields into Gaussian fields. After construction of Gaussian vector  $\hat{U}$ , the inverse approach can be used to transform new realizations of  $U$  into the original first-order marginal distribution.

With the procedure described in this section, it is possible to generate new realizations of  $u_{ar}^a$  that correspond to both  $K$  and  $p_{ar}^a$ . Hence, it allows us to estimate  $A(u_{ar}^a, p_{ar}^a)$  through Monte Carlo sampling, and then  $\eta$  using equation (11).

#### 4. SPLITTING BETWEEN ERROR SOURCES AND MODEL ADAPTATION

The error introduced by the use of the surrogate problem can stem from several sources. In fact, if we decompose the construction of the approximate solution into different steps, we can distinguish (see Fig. 3):

- the use of a surrogate problem described by the Arlequin method,
- the spatial discretization of continuum models,
- the approximation of the statistical moments (using the Monte Carlo technique for example).

Each step is driven by specific parameters. The Arlequin model is described by the size of the patch and that of the coupling zone. The spatial discretization is parametrized by the element size on each domain ( $\Omega_d$ ,  $\Omega_s$  and  $\Omega_c$ ). Finally, if we use the Monte Carlo technique to deal with the random dimension, the third step is driven by the number of Monte Carlo samples used to describe the material property. We propose here a methodology to assess the error induced by each step and separate  $\eta$  into corresponding error indicators.

##### 4.1. Introduction of intermediate models and specialized error indicators

To split different error sources, we have to consider intermediate problems. In the following, the term "continuous" refers to the opposite of "discretized" (using FEM) or "approximate" (using FEM and Monte Carlo technique). We call:



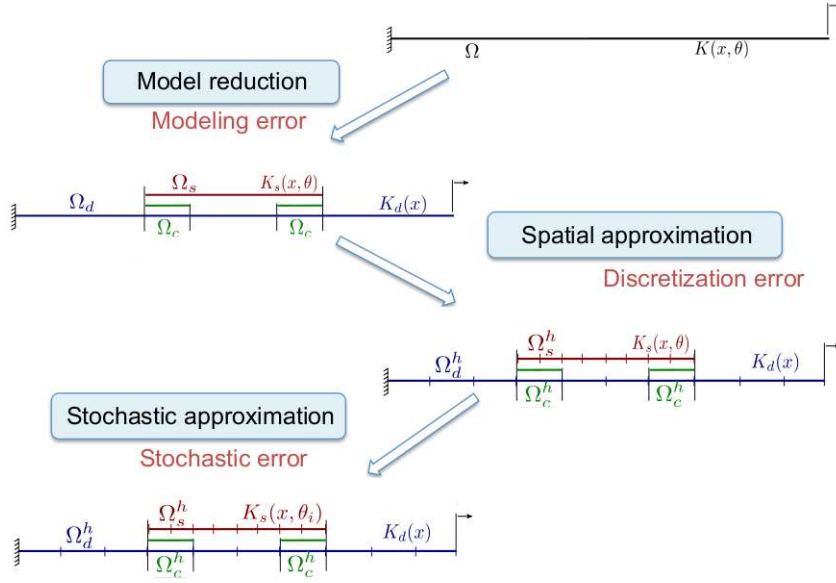


Figure 3. Approximation steps for the resolution of a 1D stochastic problem.

- Reference problem, the monomodel stochastic continuous problem (whose the solution is denoted by  $u_{ex}$  and associated residual function  $\mathcal{R}$  was introduced in (7)). To estimate the residual  $\mathcal{R}(u_{ar1}, p_{ar1})$ , we follow the approach described in subsection 3.4 using a fine mesh and a large number of Monte Carlo draws.
- First intermediate problem, the Arlequin problem, defined by (5) and Fig. 2, coupling a deterministic continuous and a stochastic continuous models. We denote the solutions  $(u_d, u_s, \lambda) \in \mathcal{V}_d^h \times \mathcal{W}_s^h \times \mathcal{W}_c^h$ , the associated monomodel solution  $u_{ar1}^c$ , and the associated residual function  $\mathcal{R}^c$ . The associated residual function  $\mathcal{R}^c((\cdot, \cdot, \cdot); (\cdot, \cdot))$  is then defined for all  $(v_d, v_s)$  as:

$$\mathcal{R}^c((u_d, u_s, \lambda); (v_d, v_s)) = \ell(v_d, v_s) - a((u_d, u_s, \lambda), (v_d, v_s)),$$

where  $\ell(v_d, v_s) = \ell_d(v_d) + L_s(v_s)$  and  $a((u_d, u_s, \lambda), (v_d, v_s, \mu)) = a_d(u_d, v_d) + A_s(u_s, v_s) + C(\lambda, v_d - v_s)$ . As previously, we follow the approach described above to evaluate the residual. As this problem refers to a continuous Arlequin model, the mesh used has to be sufficiently fine, and the number of Monte Carlo draws sufficiently large.

- Second intermediate problem, the Arlequin problem coupling a deterministic discretized and a stochastic spatially discretized models. We denote the solution  $(u_d^h, u_s^h, \lambda^h) \in \mathcal{V}_d^h \times \mathcal{W}_s^h \times \mathcal{W}_c^h$ , the associated monomodel solution  $u_{ar1}^h$ , and the associated residual function  $\mathcal{R}^h$ . This problem is defined from the previous one using a discretization technique along the space dimension, by means of the FEM, for instance. The associated residual function  $\mathcal{R}^h((\cdot, \cdot, \cdot); (\cdot, \cdot))$  is also defined for all  $(v_d^h, v_s^h)$  as:

$$\mathcal{R}^h((u_d^h, u_s^h, \lambda^h); (v_d^h, v_s^h)) = \ell^h(v_d^h, v_s^h) - a^h((u_d^h, u_s^h, \lambda^h), (v_d^h, v_s^h)),$$

where  $\ell^h$  and  $a^h$  correspond to discretized forms of  $\ell$  and  $a$ . Contrary to the previous model, this residual refers to a discretized model. Therefore, to evaluate this residual, we use the same mesh as the one used for the computable problem, a coarse one. Nevertheless, the stochastic space is not approximated yet and we thus have to use a large number of Monte Carlo draws.

- Computable problem, the Arlequin problem coupling a deterministic and a stochastic models after discretization in space and solving by the Monte Carlo technique in the random dimension. The associated solution  $(u_d^a, u_s^a, \lambda^a)$  with monomodel solution  $u_{ar1}$  is the only one we compute in practice. We will see how this solution can be used to estimate different error sources.

We can notice that:

$$\eta = q(u_{ex}) - q(u_{arl}) = [q(u_{ex}) - q(u_{arl}^c)] + [q(u_{arl}^c) - q(u_{arl}^h)] + [q(u_{arl}^h) - q(u_{arl})]$$

The different errors on  $q$  are then defined as follows:

- the stochastic error (mainly due to the approximation of the statistical moments):

$$\eta_\theta = q(u_{arl}^h) - q(u_{arl}),$$

- the discretization error (mainly due to the discretization along the spatial dimension):

$$\eta_h = q(u_{arl}^c) - q(u_{arl}^h),$$

- the modeling error induced by the use of the Arlequin method (use of a patch, and use of a deterministic material parameter instead of the stochastic one in  $\Omega_d$ ):

$$\eta_m = q(u_{ex}) - q(u_{arl}^c).$$

As the only data available are the solution of the primal problem ( $u_d^a, u_s^a, \lambda^a$ ), the solution of the adjoint problem ( $p_d^a, p_s^a, p_\lambda^a$ ), and the model (residual function) associated to each intermediate problem, we can derive estimates of the previous errors using (8):

- for the stochastic error

$$\eta_\theta \simeq \mathcal{R}^h \left( (\Pi^h u_d^a, \Pi^h u_s^a, \Pi^h \lambda^a); (\Pi^h p_d^a, \Pi^h p_s^a) \right),$$

- for the discretization error

$$\begin{aligned} \eta_h &= [q(u_{arl}^c) - q(u_{arl})] - [q(u_{arl}^h) - q(u_{arl})] \\ &\simeq \mathcal{R}^c \left( (\Pi^c u_d^a, \Pi^c u_s^a, \Pi^c \lambda^a); (\Pi^c p_d^a, \Pi^c p_s^a) \right) \\ &\quad - \mathcal{R}^h \left( (\Pi^h u_d^a, \Pi^h u_s^a, \Pi^h \lambda^a); (\Pi^h p_d^a, \Pi^h p_s^a) \right), \end{aligned}$$

- for the modeling error

$$\begin{aligned} \eta_m &= [q(u_{ex}) - q(u_{arl})] - [q(u_{arl}^c) - q(u_{arl})] \\ &\simeq \mathcal{R}(u_{arl}, p_{arl}) - \mathcal{R}^c \left( (\Pi^c u_d^a, \Pi^c u_s^a, \Pi^c \lambda^a); (\Pi^c p_d^a, \Pi^c p_s^a) \right), \end{aligned}$$

where  $(\Pi^{(c,h)} u_d^a, \Pi^{(c,h)} u_s^a, \Pi^{(c,h)} \lambda^a)$  and  $(\Pi^{(c,h)} p_d^a, \Pi^{(c,h)} p_s^a)$  are projections of  $(u_d^a, u_s^a, \lambda^a)$  and  $(p_d^a, p_s^a)$  respectively in  $(\mathcal{V}_d^{(c,h)}, \mathcal{W}_s^{(c,h)}, \mathcal{W}_c^{(c,h)})$ .

For the spatial projection, linear interpolation is chosen whereas the stochastic part is treated following the approach described in subsection 3.4. As the patch has the same size in all the intermediate problems, the projection of the primal fields is obvious. As the patch used for the adjoint problem is bigger ( $\Omega_s \subset \tilde{\Omega}_s$ ), the stochastic adjoint is restricted to the patch used of the primal model. For instance, the fields  $\Pi^h p_d^a$  and  $\Pi^h p_s^a$  are obtained from  $(p_d^a, p_s^a)$  using:

$$\begin{cases} \Pi^h p_d^a = p_d^a \\ \Pi^h p_s^a = p_s^a|_{\Omega_s} \end{cases}$$

Let remind that  $\mathcal{R}^c(\cdot, \cdot)$  is computed using a very fine mesh whereas  $\mathcal{R}^h(\cdot, \cdot)$  is estimated using the same mesh as for the primal model.

The quantities  $\eta_\theta$ ,  $\eta_h$  and  $\eta_m$  are only error indicators as the adjoint problem is approximated using the Arlequin solution. Let us notice that the different indicators can be estimated using only solutions  $u_{arl}$  and  $p_{arl}$  (direct post processing), avoiding additional cost. This is in opposition with other possible approaches in which intermediate adjoint problems would be involved and solved.

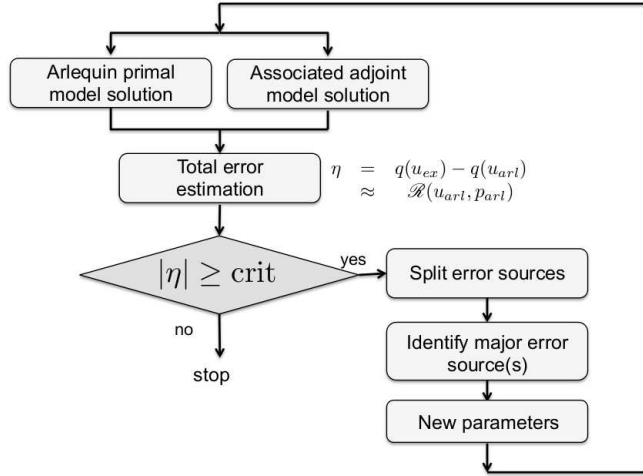


Figure 4. Greedy algorithm for the adaptation process.

#### 4.2. Algorithm for model adaptation

The basic adaptation process, based on a greedy algorithm, is described in Fig. 4. The approach consists in the following steps:

- A set of initial parameters is used to perform primal and associated adjoint problems which are both of Arlequin type.
- The total error  $\eta$  associated with the quantity of interest is estimated.
- If this error is higher than a given precision, we follow the technique described previously to split the error sources.
- The dominating error source is identified (in modulus) and the corresponding parameter is refined.
- We continue the process until the total error is below the required precision (in modulus), or when the parameter, which has to be refined, is already as fine as possible.

This choice of adaptation strategy is not unique; indeed, step 4 could be changed and we could identify two (or more) dominating errors and refine the corresponding parameters.

## 5. NUMERICAL RESULTS

In this section, we present some numerical results. Subsections 5.1 and 5.2 discuss several numerical issues, while subsections 5.3 and 5.4 present full applications (in 1D and 2D) that illustrate the theoretical results of the paper. Subsection 5.1 explores the convergence of the error estimate proposed with respect to several key parameters, and compares that error estimate with the real error. Subsection 5.2 elaborates on the importance of adequately solving the adjoint problem, in order for the error estimate to be precise. Finally, in Sections 5.3, 5.4 and 5.5, full 1D and 2D cases are treated to assess the methodology proposed in this paper, including the issue of splitting error sources to drive adaptation. All the numerical examples of this section have been computed using the software CARl (*Code Arlequin*) [42].

### 5.1. 1D model: study of the influence of various parameters

We study here the influence of various parameters of the Arlequin strategy on a simple 1D problem (Fig. 5). The problem consists in a bar of unit length under traction loading with prescribed Dirichlet conditions, as well as a unit bulk load. The material property is random and modeled as a uniform field with bounds 0.3013 and 2.3601 (arithmetic average 1.3307, harmonic mean  $1/E[1/K(x, \theta)] = 1$ , and standard deviation  $\sigma_K = 0.2$ ), and exponential correlation with correlation length  $L_{cor} = 0.01$ .

It is approximated by an Arlequin model defined in Fig. 6 where  $(\alpha_d, \alpha_s)$  are chosen linear in the coupling zone  $\Omega_c$ . The model is driven by several parameters:  $L_s$  and  $L_c$  for the definition of the patch,  $h_d$  and  $h_s$  for the size of the spatial discretization (for domains  $\Omega_d$  and  $\Omega_s$  respectively) and  $MC$  for the

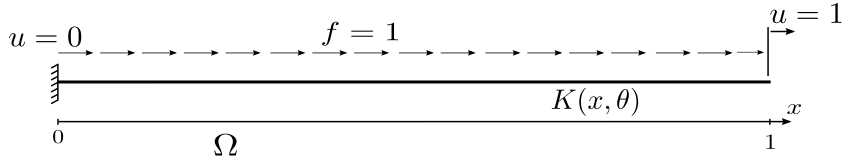


Figure 5. 1D reference problem of a cantilever beam.

number of samples used for the Monte Carlo description. The spatial discretization of  $\Omega_c$  is driven by the same size  $h_s$  as for  $\Omega_s$ .

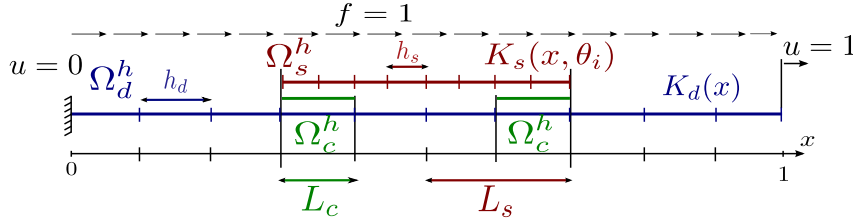


Figure 6. 1D surrogate model with the Arlequin method.

We study here two quantities of interest:

- one related to the mean of the gradient in a zone near the middle of the bar:

$$q_{\nabla}(u) = \frac{1}{0.05} \mathbb{E} \left[ \int_{0.45}^{0.5} \frac{du}{dx}(x) dx \right].$$

The associated extractor, using integration by parts, is defined by (see Fig. 7):

$$q_{\nabla}(v) = \frac{1}{0.05} \mathbb{E} \left[ \int_{\Omega} \{ \delta(x - 0.5) - \delta(x - 0.45) \} v(x) d\Omega \right],$$

- one related to the variance of the gradient mean near the middle of the bar (which is nonlinear with respect to  $u$ ):

$$q_v(u) = \text{Var} \left[ \frac{1}{0.05} \int_{0.45}^{0.5} \frac{du}{dx}(x) dx \right].$$

Following the idea developed in (9), for the nonlinear quantity  $q_v(u)$ , we can write (see Fig. 8):

$$q_v(u) - q_v(u_{ari}) \approx \frac{2}{0.05^2} \mathbb{E} [\Delta e \{ \Delta(u_{ari}) - \mathbb{E} [\Delta(u_{ari})] \}]$$

where  $\Delta e = e(x = 0.5) - e(x = 0.45)$  and  $\Delta u_{ari} = u_{ari}(x = 0.5) - u_{ari}(x = 0.45)$ . The extractor is therefore defined by:

$$q_v(v) = \frac{2}{0.05^2} \mathbb{E} \left[ \int_{\Omega} (\delta(x - 0.5) - \delta(x - 0.45)) \{ \Delta u_{ari} - \mathbb{E} [\Delta u_{ari}] \} v(x) d\Omega \right].$$

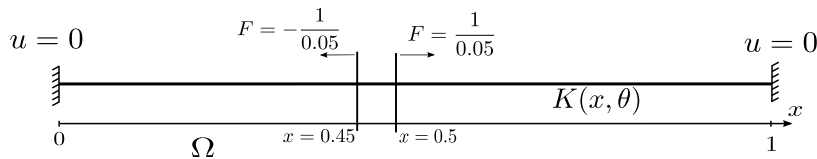


Figure 7. 1D adjoint monomodel associated to  $q_{\nabla}(u)$ .

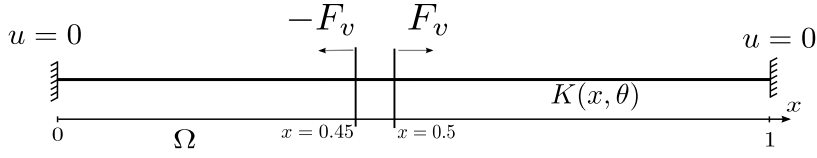


Figure 8. 1D adjoint monomodel associated to  $q_v(u)$  where  $F_v = \frac{2}{0.05^2} (\Delta u_{arl} - E[\Delta u_{arl}])$ .

We now investigate the evolution of the relative error indicator:

$$\eta_r = \frac{\mathcal{R}(u_{arl}, p_a)}{q(u_{arl})},$$

where  $p_a$  is the approximate solution of the adjoint problem (using the FEM and Monte Carlo techniques for instance). This error indicator (drawn in dashed line and circles), will be compared for each of the two quantities of interest to the true relative error (drawn in solid line):

$$\eta_{ref} = \frac{q(u_{ref}) - q(u_{arl})}{q(u_{arl})}.$$

where  $q(u_{ref})$  is evaluated using a reference monomodel whose parameters are listed and computed using the FEM and the Monte Carlo technique. The large number of Monte Carlo draws used and the fine spatial discretization allow to neglect the error (the standard deviation of the true relative errors, taking 20 different sequences of 100 000 Monte-Carlo draws is less than  $10^{-3}$  for  $q_\nabla$  and less than  $5 \times 10^{-3}$  for  $q_v$ ). In the following subsections, we study the evolution of the error related to  $q_\nabla(u)$  (results in Section 5.1.1, associated adjoint problem described in Fig. 7), and  $q_v(u)$  (results in Section 5.1.2, associated adjoint problem described in Fig. 8), with respect to two parameters: the number  $MC$  of Monte Carlo draws used for the primal model (left result in figures) and the half-size of the stochastic patch  $L_s$  (right result in figures). As  $q(u_{arl})$  depends on the sequence of Monte Carlo draws, we show results for 20 different sequences of draws. The set of parameters used for the reference model, the primal model and the adjoint model are defined in Tab. I and Tab. II. In these tables, when a monomodel is used, we give also the spatial discretization mesh size  $h$ .

models	type	$L_s$	$L_c$	$MC$	$h_d$	$h_s$	$h$
reference	mono	-	-	100 000	-	-	0.002
primal	arlequin	0.3	0.01	[20, 100 000]	0.002	0.002	-
adjoint	mono	-	-	100 000	-	-	0.002

Table I. Definition of model parameters used for the study of  $q_\nabla$  and  $q_v$  with respect to  $MC$ . 20 different sequences of Monte Carlo draws are used for the primal model.

models	type	$L_s$	$L_c$	$MC$	$h_d$	$h_s$	$h$
reference	mono	-	-	100 000	-	-	0.002
primal	arlequin	[0.2, 0.5]	0.01	100 000	0.002	0.002	-
adjoint	mono	-	-	100 000	-	-	0.002

Table II. Definition of model parameters used for the study of  $q_\nabla$  and  $q_v$  with respect to  $L_s$ . 20 different sequences of Monte Carlo draws are used for the primal model.

### 5.1.1. Example A: study of the evolution of the relative error associated with $q_\nabla(u)$

In Fig. 9, as the adjoint model is solved with the same refinement as for the reference model, the estimated error is superposed to the true relative error. As expected, the error decreases in both cases. On Fig. 9 (right), when the half-size of the stochastic patch evolves from 0.2 to 0.5, the error decreases from almost 2% down to less than 0.5%. On Fig. 9 (left), with more than 500 Monte Carlo draws, for a half-size of 0.3, the error is lower than 5%. Nevertheless, we remark that, when the number of Monte

Carlo draws increases, the error does not tend to zero. This comes from the fact that the primal model is approximated using Monte Carlo draws but also using the Arlequin method. That means that both Monte Carlo draws and half-size of the stochastic patch ( $L_s = 0.3$ ) contribute to the total error. Indeed, the asymptotic value of the error in the left picture corresponds to an error close to 1.4% for  $L_s = 0.3$  in Fig. 9 (right).

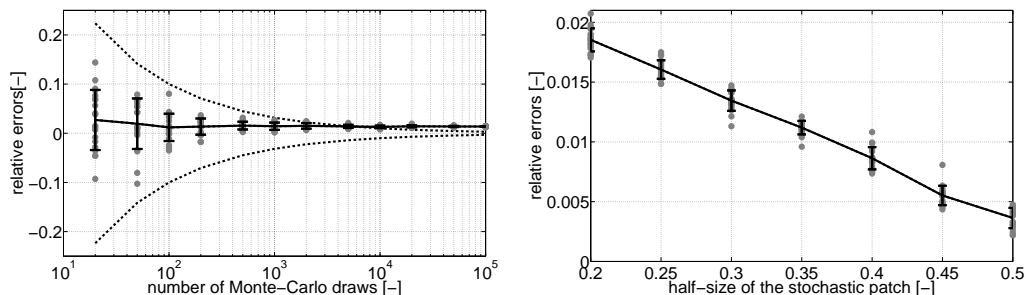


Figure 9. Evolution of relative errors for the evaluation of  $q_{\nabla}$  with primal models defined by Tab. I and Tab. II:  $\eta_r$  and  $\eta_{ref}$  (superposed) in gray markers for several sequences of draws with mean in solid line and standard deviations (error bars), with analytical rate of  $1/\sqrt{MC}$  in dashed line with respect to the number of Monte Carlo draws [left] and with respect to the half-size of the stochastic patch [right].

### 5.1.2. Example B: study of the evolution of the relative error associated with $q_v(u)$

In Fig. 10, we remark that the true error and the estimated error decrease. Nevertheless, the error estimate is very optimistic (lower in modulus) for the evolution with respect to  $L_s$  and quite pessimistic (higher in modulus) for the evolution with respect to  $MC$ . Contrary to the cases involving  $q_{\nabla}$ , here, the main difference is that the adjoint problem cannot be solved perfectly as its load is defined from the primal displacement solution. Moreover, the difference between the true error and the estimated one is also due to the linearization of the quantity of interest in (9). Again, a key point here is that the true error, in the picture on the left, seems to tend to a significant non-zero value. For the same reasons as those seen previously, it is due to the fact that both Monte Carlo draws and half-size of the stochastic patch contribute to the total error. We then propose in the next section to study the evolution of the error when we take an Arlequin model with the same half-size of the stochastic patch as the reference.

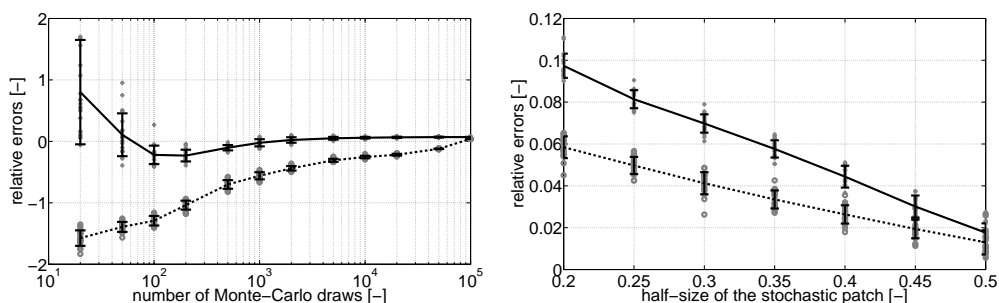


Figure 10. Evolution of relative errors for the evaluation of  $q_v$  with primal models defined by Tab. I and Tab. II:  $\eta_r$  in gray circles for several sequences of draws, with mean (solid line) and standard deviations (error bars) and of  $\eta_{ref}$  in grey crosses for several sequences of draws with mean (dashed line) and standard deviations (error bars), with respect to the number of Monte Carlo draws [left] and with respect to the half-size of the stochastic patch [right].

### 5.1.3. Study of parameter $MC$ when the reference model is an Arlequin model

We can remark that the parameter  $MC$  studied before drives the approximation of the stochastic space. If we follow the splitting description of the total process, we can observe that the stochastic approximation process occurs between two spatially discretized Arlequin models. That explains the fact that when we study the evolution of the error with respect to  $MC$ , we also evaluate the error induced by



the use of the Arlequin method. To avoid that, we propose here to study the evolution of the error with respect to a reference model which is an Arlequin model with the same coupling and the same spatial mesh step as described in Tab. III.

models	type	$L_s$	$L_c$	$MC$	$h_d$	$h_s$	$h$
reference	arlequin	0.3	0.1	100 000	0.002	0.002	-
primal	arlequin	0.3	0.1	[20, 100 000]	0.002	0.002	-
adjoint	arlequin	0.3	0.1	100 000	0.002	0.002	-

Table III. Definition of models used for the study of  $q_\nabla$  or  $q_v$  with respect to  $MC$  with Arlequin model as the reference. 20 different sequences of Monte Carlo draws are used for the primal model.

Fig. 11 shows the evolution of the true relative error  $\eta_{ref}$  (solid line) and the error estimate  $\eta_r$  (dashed line and circles) with respect to the number of Monte Carlo draws used in the primal problem, for the evaluations of  $q_\nabla$  (left) and  $q_v$  (right). We remark in this case that we efficiently capture the error related to the parameter  $MC$  alone. This time, the true errors actually decrease down to a value close to zero. In fact, the last point proposed here corresponds to the Arlequin reference model used in the example. These curves correspond to a translation of the curves in Fig. 9 and Fig. 10 (left) of a value corresponding to the error when a patch of half-size  $L_s = 0.3$  is used.

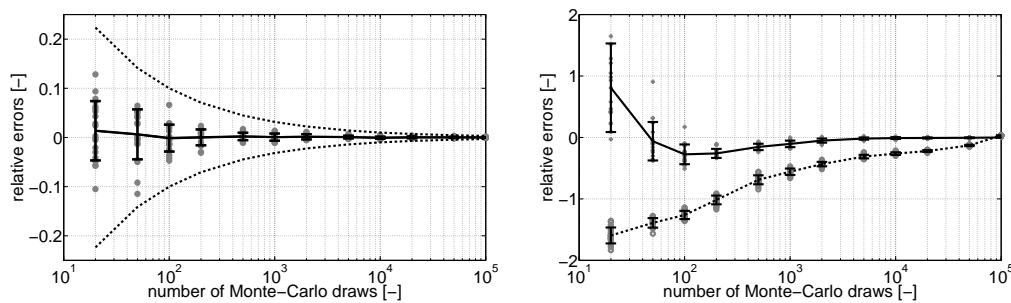


Figure 11. Evolution of relative errors for the evaluation of  $q_\nabla$  [left] and  $q_v$  [right] with models defined by Tab. III:  $\eta_r$  (grey circles) and  $\eta_{ref}$  (grey crosses) for several sequences with mean in solid line and standard deviations (error bars), analytical rate of  $1/\sqrt{MC}$  in dashed line.

#### 5.1.4. General conclusions on the influence of the parameters

For the quantities of interest studied here, the size of the stochastic patch or the number of Monte Carlo draws used for the primal problem have a strong influence on the error. When the adjoint model is solved with sufficient accuracy, the estimated error perfectly matches the true error in the case of the linear quantity of interest  $q_\nabla$ . For the estimation of  $q_v$ , the difference between the errors is due to the fact that  $q(u_{ex}) - q(u_{arl})$  is estimated by  $q'(u_{arl}, e)$  that corresponds to the first order term only (see (9)). Finally, Section 5.1.3 showed that the error for high  $MC$  and large  $L_s$  comes from the use of an Arlequin surrogate model for the solution of the adjoint problem.

In Section 5.2, we propose to study the influence of the enrichment of the adjoint model, compared to the primal model one, when an approximate adjoint model is used to estimate the quantity of interest  $q_\nabla$ .

#### 5.2. 1D model: adjoint problem approximation

As seen previously, in practice, the adjoint problem will also be approximated by the Arlequin method. Not to increase too much the computation time, parameters of the adjoint problem have to be set up correctly. In this part, we study the effectivity of the error estimates when adjoint model parameters vary. The parameters under study are:

- the half-size of the stochastic patch ( $L_{sa}$ ) used for the adjoint model (when the corresponding parameter  $L_{sp}$  varies in the primal model),
- the number of Monte Carlo draws ( $MC_a$ ) used for the adjoint model (when the corresponding parameter  $MC_p$  varies in the primal model).

The aim is to get a feeling of how to enrich the adjoint model compared to the primal model to get an accurate estimation of the true error.

### 5.2.1. Influence of the parameter $L_s$ for the estimation of $q_{\nabla}(u)$

models	type	$L_s$	$L_c$	$MC$	$h_d$	$h_s$	$h$
reference	mono	-	-	100 000	-	-	0.002
primal	arlequin	[0.2, 0.5]	0.1	100 000	0.002	0.002	-
adjoint	arlequin	[0.2, 0.5]	0.1	100 000	0.002	0.002	-

Table IV. Definition of models used for the calibration of the adjoint problem (parameter  $L_s$ ) associated to  $q_{\nabla}(u)$ . 20 different sequences of Monte Carlo draws are used for the adjoint model.

Tab. V shows the evolution of  $\eta_r$  and  $\eta_{ref}$  with respect to the half-size of the stochastic patch used for the primal model ( $L_{sp}$ ). In this case, the increase of the size of the stochastic patch for the adjoint model does not seem to have a strong influence on the accuracy of the error estimate. We can remark a worsening of this accuracy when the size of the stochastic patch for the primal model increases. We can also notice that with a half-size of patch of 0.5 for the adjoint model, the difference between the true error and the estimated error is low but still significant. That means that even with the largest patch, the adjoint problem is not solved as accurately as in the previous section. This is mainly due to the fact that the coupling zone constrains the stochastic solution in a non-zero part of the problem.

For the adaptive examples described in Section 5.3, we choose to set the patch size of the adjoint model with only one value ( $L_{sa} = 0.45$ ) independently of the patch size of the primal model ( $L_{sp}$ ).

$L_{sa}$	0.2	0.3	0.4	0.5	$\eta_{ref}[10^{-3}]$
$L_{sp} = 0.2$	18.0(2.4)	18.1(1.0)	18.3(0.9)	18.1(0.9)	18.5(1)
0.3	-	10.1(1.8)	10.7(0.7)	10.5(0.8)	13.7(1)
0.4	-	-	5.3(0.9)	5.0(0.6)	8.6(1)
0.5	-	-	-	2.3(0.5)	3.4(1)

Table V. Evolution of  $\eta_r[10^{-3}]$  with respect to the half-size of the stochastic patch of the primal model ( $L_{sp}$ ), for the evaluation of  $q_{\nabla}(u)$  with models defined by Tab. IV. Standard deviations are also given between parenthesis.

### 5.2.2. Influence of the parameter $MC$ for the estimation of $q_{\nabla}(u)$

models	type	$L_s$	$L_c$	$MC$	$h_d$	$h_s$	$h$
reference	mono	-	-	100 000	-	-	0.002
primal	arlequin	0.3	0.1	[20, 100 000]	0.002	0.002	-
adjoint	arlequin	0.45	0.1	[20, 100 000]	0.002	0.002	-

Table VI. Definition of models used for the calibration of the adjoint problem (parameter  $MC$ ) associated to  $q_{\nabla}$ . 20 different sequences of Monte Carlo draws are used for the adjoint model.

Tab. VII shows the evolution of  $\eta_r$  and  $\eta_{ref}$  with respect to the number of Monte Carlo draws used for the primal model. We remark again that the estimation is only slightly modified when we take a large number of Monte Carlo draws for the adjoint model. In Tab. VII, for  $MC_p = MC_a = 100\,000$ , the relative estimated error  $10.8 \times 10^{-4}$  can also be read in Tab. V for  $L_s = 0.3$  for the primal model and between  $L_s = 0.4$  and  $L_s = 0.5$  for the adjoint model. For the adaptive examples described in Section 5.3, the number of Monte Carlo draws for the adjoint model ( $MC_a$ ) is set to 100 000.

### 5.2.3. General conclusions on the approximation of the adjoint model

As soon as the Arlequin model is used for the adjoint problem, the estimation of the error loses efficiency, specially concerning the number of Monte Carlo draws used for the adjoint model. Nevertheless, when the stochastic patch is long enough and when the number of Monte Carlo draws is sufficiently large, the difference between the reference error and the estimated error is quite small. In these cases, the estimated error tends to underestimate the true error.

$MC_a$	20	200	2 000	20 000	100 000	$\eta_{ref} [10^{-3}]$
$MC_p = 20$	-42.5(39.5)	-36.2(36.6)	-34.6(34.9)	-34.2(35.0)	-34.5(34.7)	4.1(1)
200	-	1.9(12.4)	2.7(8.7)	3.0(8.7)	3.0(8.7)	18.6(1)
2 000	-	-	5.4(3.5)	4.7(1.2)	4.7(0.8)	11.8(1)
20 000	-	-	-	7.1(1.0)	7.4(0.7)	11.0(1)
100 000	-	-	-	-	10.8(0.9)	13.7(1)

Table VII. Evolution of  $\eta_r [10^{-3}]$  with respect to the number of Monte Carlo draws used for the primal model ( $MC_p$ ), for the evaluation of  $q_\nabla$  with models defined by Tab. VI. Standard deviations are also given between parenthesis.

In regards to the number of Monte Carlo draws used for the adjoint model, it seems that the estimated error is sufficiently accurate when this number is very large. For instance, if we take 100 000 Monte Carlo draws, the estimated error is very accurate as the patch size of the adjoint problem ( $L_{sa} = 0.45$ ) still affects the approximation of the adjoint solution, and therefore the quality of the estimation.

Finally, for model adaptation, we choose to approximate the adjoint problem using the Arlequin method but with a large patch size ( $L_s = 0.45$ ), and a large number of Monte Carlo trials ( $MC = 100\ 000$ ). The other parameters are set to:  $h_d = 0.01$  and  $h_s = 0.002$ . This choice is non unique and can be discussed and changed if needed (in the case where we have to refine the mesh size for example).

### 5.3. Model adaptation for the 1D problem

We study in this section the problem described in Section 5.1. In particular, we present results from the adaptation process obtained when we investigate the two quantities of interest  $q_\nabla$  and  $q_v$ . The parameters are  $L_s$  (half-size of the stochastic patch),  $MC$  (number of Monte Carlo draws used), the spatial mesh size  $h_d$  of the deterministic model, while the spatial mesh size  $h_s$  of the stochastic model is fixed at 0.002.

In Fig. 12 and Tab. VIII, we show the results for the error associated with  $q_\nabla$ . We observe that the main error sources are due to the use of a low number of Monte Carlo draws, then to the use of the Arlequin method. By increasing the corresponding parameters ( $L_s$  from 0.2 to 0.45 and  $MC$  from 5 to 2 000), the relative estimate error  $\eta_r$  decreases from 8.7% to 6.6%. The corresponding true error decreases from 14% to 0.7%. More precisely, the algorithm stops after iteration 3 and the dominant error is due to the use of the Arlequin model. The last iteration is added manually to illustrate the possibility to decrease the total error by increasing the number of Monte Carlo draws (the second main source of the error), and therefore decreasing the stochastic error. Tab. VIII also shows the evolution of the true errors with respect to the patch size, the discretization and the Monte Carlo truncation. As we can see, the various error estimates ( $\eta_m, \eta_h, \eta_\theta$ ) give a good indication on the true errors, specially for  $\eta_\theta$  and  $\eta_h$ . The bias on the estimation of the total error impacts only the estimation of the modeling error.

model	1	2	3	4
$L_s$	0.2	0.2	0.45	0.45
$MC$	5	200	200	2 000
$h_d$	0.05	0.05	0.05	0.05
$h_s$	0.002	0.002	0.002	0.002
$\eta_m$	0.0682	0.0907	0.0658	0.0639
$\eta_m^{ref}$	0.0158	0.0189	0.0061	0.0059
$\eta_h$	-0.0216	-0.0197	-0.0127	-0.0131
$\eta_h^{ref}$	0.0432	-0.0150	-0.0103	-0.0126
$\eta_\theta$	-0.1342	0.0180	0.0288	-0.0005
$\eta_\theta^{ref}$	-0.1995	0.0210	0.0265	-0.0009
$ \eta_r $	0.0876	0.089	0.0842	0.0660
$ \eta_{ref} $	0.1405	0.0248	0.0223	0.0077

Table VIII. Evolution of parameters and relative errors (true and estimate) for the evaluation of  $q_\nabla$ .

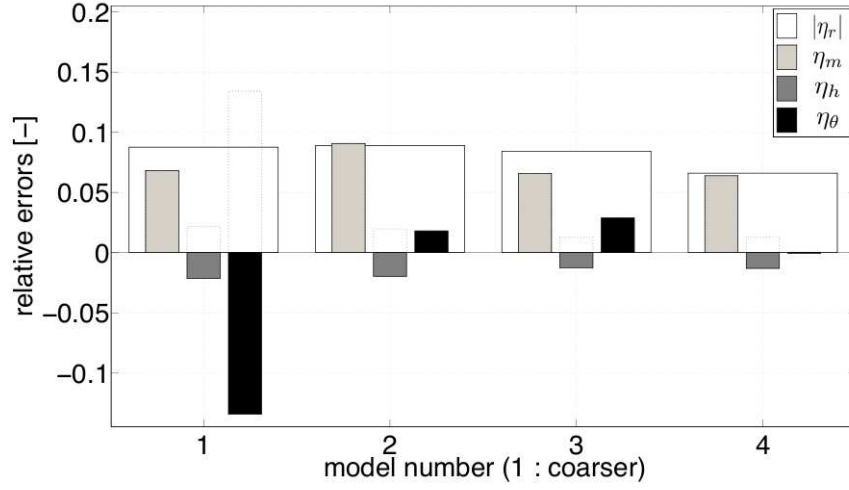


Figure 12. Evolution of the relative estimates of the total error  $\eta_r$  (white), modeling error  $\eta_m$  (light gray), discretization error  $\eta_h$  (dark gray), and stochastic error  $\eta_\theta$  (black) during adaptive process for the estimation of  $q_\nabla$ .

In Fig. 13 and Tab. IX, we study the error associated to  $q_v$ . In this case, the study shows that the main error sources are due to: (i) the use of a low number of Monte Carlo realizations; (ii) the size of the stochastic patch; (iii) finally (for the last iteration) the size of the mesh of the deterministic model. By increasing the corresponding parameters alternately, the relative estimate error  $\eta_r$  decreases from more than 86% to less than 0.5%.

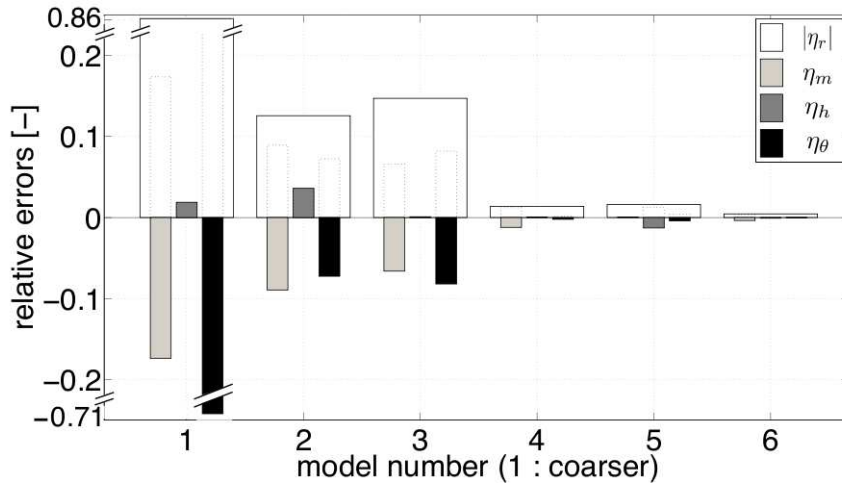


Figure 13. Evolution of the relative estimates of the total error  $\eta_r$  (white), modeling error  $\eta_m$  (light gray), discretization error  $\eta_h$  (dark gray), and stochastic error  $\eta_\theta$  (black) during adaptive process for the estimation of  $q_v$ .

This simple example shows the efficiency of the splitting error sources methodology. Indeed, the stochastic error and the discretization error correspond to the true errors as soon as the second iteration. The approximation of the adjoint problem using an Arlequin model mainly affects the modeling error estimate. Finally, the use of this technique permits to decrease efficiently the error estimate by adapting the corresponding parameter for each step of the process.

model	1	2	3	4	5	6
$L_s$	0.2	0.2	0.3	0.3	0.35	0.35
$MC$	200	10 000	10 000	50 000	50 000	50 000
$h_d$	0.05	0.05	0.05	0.05	0.05	0.01
$h_s$	0.002	0.002	0.002	0.002	0.002	0.002
$\eta_m$	-0.174	-0.0893	-0.0661	-0.0121	0.0007	-0.0036
$\eta_\theta$	-0.7077	-0.0724	-0.0819	-0.0022	-0.0040	-0.0001
$\eta_h$	0.0189	0.0360	0.0009	0.0006	-0.0128	-0.0008
$ \eta_r $	0.862	0.126	0.147	0.0137	0.0161	0.0045

Table IX. Evolution of parameters and relative error for the evaluation of  $q_v$ .

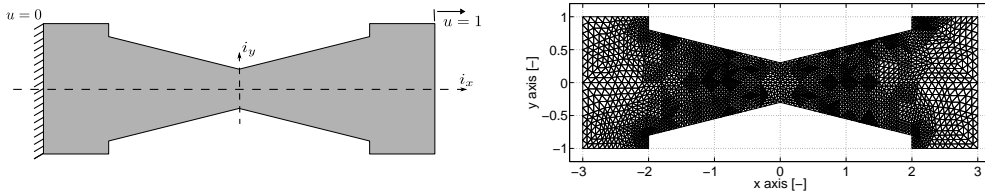


Figure 14. 2D case and associated mesh used for the estimation of the residual  $\mathcal{R}$ .

#### 5.4. Model adaptation of a 2D problem

We now consider a 2D sample  $\Omega$  inscribed in the box  $[-3, 3] \times [-1, 1]$  (see Fig. 14). The sample is submitted to a prescribed Dirichlet condition, with no bulk load. The boundary conditions are  $u(x = -3, y) = 0$ ,  $u(x = 3, y) = 1$ , and  $\nabla u \cdot \mathbf{n} = 0$  for the remaining edges, almost surely. The model is described by a random material property  $K(x, \theta)$ , modeled as a uniform field with bounds 0.3542 and 2.1938 (with geometric mean  $1/E[1/K(x, \theta)] = 1$ , and standard deviation  $\sigma_K = 0.2$ ), and exponential correlation with correlation length  $L_{cor} = 0.05$  in each direction. To estimate the residual numerically, the reference monomodel problem is spatially discretized by 33 792 elements and we use  $MC = 5\,000$  Monte Carlo draws to represent the stochastic field  $K$ .

The quantity of interest considered here is the component  $x$  of the gradient in a given zone  $\Omega_{int}$ . Considering the model given in Fig. 15,  $\Omega_{int}$  is located near the middle of the sample (where the loading is applied). This quantity of interest is defined by:

$$q_{2D}(u) = \mathbb{E} \left[ \int_{\Omega_{int}} \nabla u \cdot \mathbf{i}_x \, d\Omega \right]. \quad (14)$$

The reference problem is approximated by the Arlequin method with a centered patch. The corresponding adjoint problem is described in Fig. 15. It is loaded by  $\mathbf{p}_q = K(x, \theta) \nabla u(x, \theta) = \mathbf{i}_x$  with  $\mathbf{i}_x$  the unit vector of the x-axis. It is spatially discretized by 8 448 elements for the deterministic model and 6 144 for the stochastic model in a patch of half-size  $L_s = 1.8$ . Moreover, we use 5 000 Monte Carlo draws for the adjoint model.

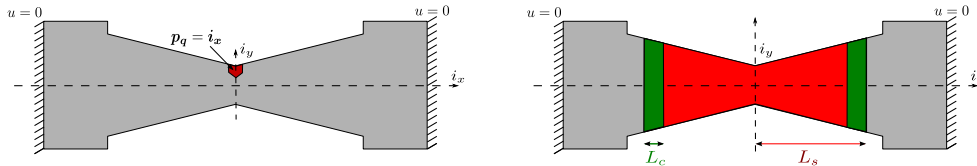


Figure 15. 2D associated adjoint problem.

Using the adaptive strategy introduced in Section 4.2, we investigate the absolute value of  $\eta_r$  :

$$\eta_r = \frac{\mathcal{R}(u_{arl}, p_a)}{q_{2D}(u_{arl})}. \quad (15)$$

Fig. 16 and Tab. X show that the main error sources are due to the use of a weak number of Monte Carlo draws and due to the use of the Arlequin method. By increasing the corresponding parameters, the relative estimate error  $\eta_r$  decreases from 21% to 5%.

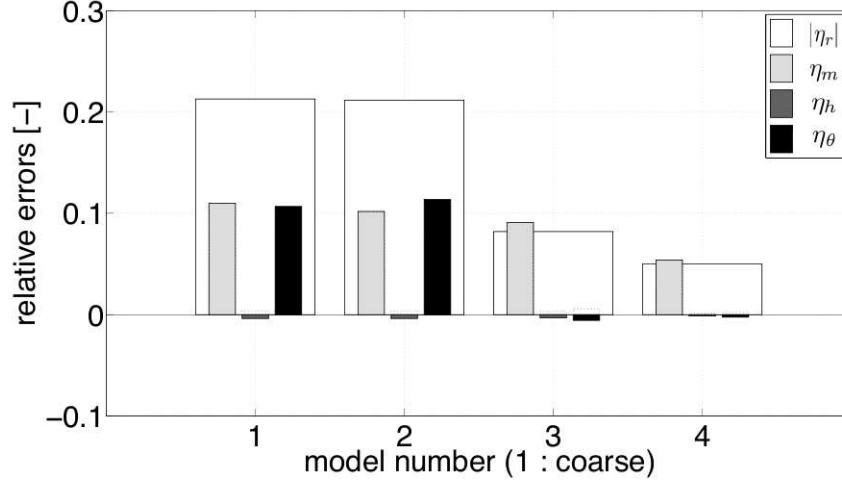


Figure 16. Evolution of relative estimates of the total error  $\eta_r$  (white), modeling error  $\eta_m$  (light gray), discretization error  $\eta_h$  (dark gray), and stochastic error  $\eta_\theta$  (black) during adaptive process for the estimation of  $q_{2D}$ .

$L_s$	0.75	0.9	0.9	1.65
$MC$	5	5	500	500
$N_d$	528	528	528	528
$N_s$	3040	3424	3424	5632
$\eta_m$	0.1098	0.1018	0.0908	0.0539
$\eta_h$	-0.0038	-0.0038	-0.0031	-0.0013
$\eta_\theta$	0.1067	0.1135	-0.0057	-0.0024
$ \eta_r $	0.2128	0.2116	0.0820	0.0502

Table X. Evolution of parameters and relative errors for the evaluation of  $q_{2D}$ .  $N_d$  and  $N_s$  represent the number of elements of the deterministic discretized model and of the stochastic patch respectively. Note that  $N_s$  increases only because  $L_s$  increases, the patch mesh is not finer.

As for the 1D adaptation example, the splitting of error sources technique permits to identify the dominating error source. The associated parameter can then be refined. For this 2D example, the Arlequin model with a relatively small number of Monte Carlo draws, and a medium-sized patch, gives an estimation of the quantity of interest with less than 6% of error.

### 5.5. Practical study case

In dental restoration, dentists use bio-compatible resin to replace the ill part of a tooth (damaged by caries for example). The adhesion of this resin with the tooth is a key issue of the treatment.

When caries reach the dentin, the adhesion is currently achieved by micromechanical seal of the resin with the demineralized dentin. The resin has to sufficiently infiltrate the dentin to obtain an effective adhesion. We study in this part the infiltration speed of a resin in the demineralized dentin. The studied problem is described in Fig. 17. The resin infiltrates first the tubule (represented by "holes" in the figure) and then a network of collagen fibers that is the main component of a demineralized dentin. The porosity of this medium is modeled by a stochastic field.

We assume that the flow follows the Darcy assumptions in a permanent regime. The pressure verifies the equation (1) where the random material property  $K(x, \theta)$  is modeled as a uniform field with bounds  $[1.43 \times 10^{-6}, 1.43 \times 10^{-4}] \mu m^2 (Pa \cdot s)^{-1}$  (with geometric mean  $1/E[1/K(x, \theta)] = 3.19 \times 10^{-5} \mu m^2 (Pa \cdot s)^{-1}$ ), and exponential correlation with correlation length  $L_{cor} = 1 \mu m$  in each direction.



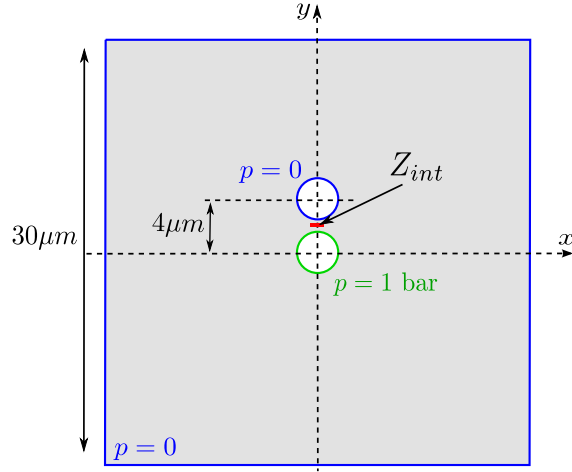


Figure 17. Study of resin infiltration in demineralized dentin. Two dentinal tubules of diameter  $3\mu m$  are modeled.

Only one of the tubule is filled of resin whereas the other tubule does not. This condition is modeled by a prescribed pressure of 1 bar on the bottom tubule (which corresponds to the pressure applied manually by the dentist), whereas the other edges are submitted to an over pressure of 0 bar. The problem is described using the Arlequin approach in which a square patch, centered on the sample, is used to model the tubules and the stochastic field, whereas the substrate does not contain tubules and heterogeneities. With these considerations, the smallest patch is a square of  $18\mu m$  side length. We seek to adapt the different parameters of the method by considering as quantity of interest the average flow velocity along the  $y$  axis in a specific zone defined by  $Z_{int} = \{M(x, y) | (x, y) \in [-1/3, 1/3] \times [2 - 1/3, 2 + 1/3]\}$ :

$$q_f(p) = E \left[ \frac{-1}{|Z_{int}|} \int_{Z_{int}} K(x, \theta) \nabla p(x, \theta) \cdot \mathbf{i}_y d\Omega \right] \quad (16)$$

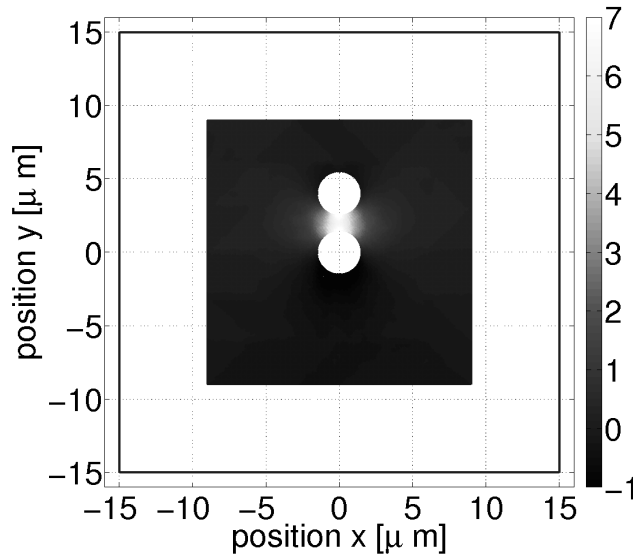


Figure 18. Mean value of  $y$ -component of the flow velocity [ $\mu m \cdot s^{-1}$ ] in an Arlequin patch (size :  $18\mu m$ ) obtained from 100 Monte Carlo realizations and with a triangular mesh (whose the maximum diameter of the inscribed circle is  $0.05\mu m$  (corresponding to a total estimated error of  $-0.2\%$  for the evaluation of  $q_f$ ). The boundary of the substrate is visible in solid lines.

The results (see Fig 18) show that the flow is highly localized between the two tubules. Following the approach described on this paper, the quantity  $q_f$  can be evaluated with an estimated accuracy of

less than 0.2% for the absolute value of the total error (0.06% for the modeling error,  $-0.18\%$  for the stochastic error and 0.001% for the discretization error) reached at the first increment.

## 6. CONCLUSIONS

The main contribution of the paper has been to propose a computational framework for addressing the control of errors coming from three different sources:

- a. the modeling error, due to the use of the Arlequin method coupling a deterministic model with a stochastic one to approximate a full stochastic problem,
- b. the discretization error, due to the discretization of the spatial dimension, using the FEM for instance,
- c. the stochastic error, due to the use of the Monte Carlo technique to approximate statistical moments.

A goal-oriented error estimation technique was introduced to quantify the capability of the Arlequin framework to evaluate some specific quantities of interest. Adaptivity was also considered. For that purpose, the corresponding error strategy was enriched to identify separately the different error sources. Using only the solution of the primal problem, the solution of the adjoint problem, and the definition of the residual associated to specific intermediate problems, we showed that it is possible to identify the major error source and refine the corresponding parameter to reduce the total error.

Future research will deal with the development of an optimal adaptive process where the error could be spatially analyzed, on one hand, and the coupling between two stochastic models, on the other hand.

## 7. ACKNOWLEDGMENTS

This work was partially supported by the ANR project TYCHE (Advanced methods using stochastic modeling in high dimension for uncertainty modeling, quantification and propagation in computational mechanics of solids and fluids), with project number ANR-2010-BLAN-0904, and by grants from DIGITEO and Région Ile-de-France, with project number 2009-26D.

## References

1. Babuška I., Melenk J.M., 1997. *The partition of unity method*, International Journal for Numerical Methods in Engineering, 40:727-758. 1
2. Moës N., Dolbow J., Belytschko T., 1999. *A finite element method for crack growth without remeshing*, International Journal for Numerical Methods in Engineering, 46:131-150. 1
3. Hughes T.J.R., Feijóo G.R., Mazzei L., Quincy J., 1998. *The variational multiscale method—a paradigm for computational mechanics*, Computer Methods in Applied Mechanics and Engineering, 166(1-2):3-24. 1
4. Hou T.Y., Wu X.H., 1997. *A Multiscale Finite Element Method for Elliptic Problems in Composite Materials and Porous Media*, Journal of Computational Physics, 134:169-189. 1
5. Oden J.T., Zohdi T.I., 1997. *Analysis and adaptive modeling of highly heterogeneous elastic structures*, Computational Methods in Applied Mechanics and Engineering, 138(3-4):367-391. 1, 2
6. Fish J., 1992. *The s-version of the finite element method*, Computers & Structures, 43(3):539-547. 1
7. Ben Dhia H., 1998. *Multiscale mechanical problems: the Arlequin method*, Comptes-Rendus de l'Académie des Sciences - séries IIB, Mechanics, Physics, Astronomy, 326(12):899-904. 1, 2, 4
8. Xiao S.P., Belytschko T., 2004. *A bridging domain method for coupling continua with molecular dynamics*, Computer Methods in Applied Mechanics and Engineering, 193(17-20):1645-1669. 1
9. Ben Dhia H., 2008. *Further insights by theoretical investigations of the multiscale Arlequin method*, International Journal for Multiscale Computational Engineering, 6(3):215-232. 1, 2, 4
10. E W., Ming P., Zhang P., 2005. *Analysis of the heterogeneous multiscale method for elliptic homogenization problems*, Journal of the American Mathematical Society, 18:121-156. 1
11. Xu X.F., 2007. *A multiscale stochastic finite element method on elliptic problems involving uncertainties*, Computer Methods in Applied Mechanics and Engineering, 196(25-28):2723-2736. 1
12. Chamoin L., Oden J.T., Prudhomme S., 2008. *A stochastic coupling method for atomic-to-continuum Monte Carlo simulations*, Computer Methods in Applied Mechanics and Engineering, 197(43-44):3530-3546. 2
13. Cottreau R., Clouteau D., Ben Dhia H., Zaccardi C., 2011. *A stochastic-deterministic coupling method for continuum mechanics*, Computer Methods in Applied Mechanics and Engineering, 200:3280-3288. 2, 4
14. Ben Dhia H., Rateau G., 2001. *Mathematical analysis of the mixed Arlequin method*, Comptes-Rendus de l'Académie des Sciences - séries I, Mathematics, 332(7):649-654. 2
15. Ben Dhia H., Zammali C., 2004. *Level-Sets and Arlequin framework for dynamic contact problems*, European Journal of Computational Mechanics, 13(5-6-7):403-414. 2

16. Ben Dhia H., Rateau G., 2005. *The Arlequin method as a flexible engineering design tool*, International Journal for Numerical Methods in Engineering, 62(11):1442-1462. 2
17. Bauman P.T., Ben Dhia H., Elkhodja N., Oden J.T., Prudhomme S., 2008. *On the application of the Arlequin method to the coupling of particle and continuum models*. Computational Mechanics, 42:511–530. 2
18. Prudhomme S., Ben Dhia H., Bauman P.T., Elkhodja N., Oden J.T., 2008. *Computational analysis of modeling error for the coupling of particle and continuum models by the Arlequin method*, Computer Methods in Applied Mechanics and Engineering, 197(41-42):3399-3409. 2, 5
19. Ben Dhia H., Torkhani M., 2011. *Modeling and computation of fretting wear of structures under sharp contact*, International Journal for Numerical Methods in Engineering, 85:61-83. 2
20. Hu H., Damil N., Potier-Ferry M., 2011. *A bridging technique to analyse the influence of boundary conditions on instability patterns*, Journal of Computational Physics, 230(10):3753-3764. 2
21. Cottreau R., Ben Dhia H., Clouteau D., 2010. *Localized modeling of uncertainty in the Arlequin framework*, IUTAM Symposium on the Vibration Analysis of Structures with Uncertainties, 477-488. R. Langley and A. Belyaev. 2, 4
22. Ainsworth M., Oden J.T., 1997. *A posteriori error estimation in finite element analysis*, Computational Mechanics Advances, 142:1-88. 2
23. Stein E., 2003. *Error-controlled Adaptive Finite Elements in Solid Mechanics*. J. Wiley (ed.). 2
24. Ladevèze P., Pelle J.-P., 2004. *Mastering calculations in linear and nonlinear mechanics*, Springer. 2
25. Becker R., Rannacher R., 2001. *An optimal approach to shape a posteriori error estimation in finite element methods.*, In Acta Numerica, Iserles A (ed.), Cambridge University Press, 10:1-102. 2, 5
26. Paraschivou M., Peraire J., Patera A.T., 1997. *A posteriori finite element bounds for linear functional outputs of elliptic partial differential equations*. Computer Methods in Applied Mechanics and Engineering, 150:289-312. 2
27. Prudhomme S., Oden J.T., 1999. *On goal-oriented error estimation for elliptic problems: application to the control of pointwise errors*, Computer Methods in Applied Mechanics and Engineering, 176:313-331. 2, 5
28. Prudhomme S., Chamoin L., Ben Dhia H., Bauman P.T., 2009. *An adaptive strategy for the control of modeling error in two-dimensional atomic-to-continuum coupling simulations*, Computer Methods in Applied Mechanics and Engineering, 197:1887-1901. 2, 5, 6
29. Ben Dhia H., Chamoin L., Oden J.T., Prudhomme S., 2011. *A new adaptive modeling strategy based on optimal control for atomic-to-continuum coupling simulations*, Computer Methods in Applied Mechanics and Engineering, 200(37-40):2675-2696. 2, 5, 6
30. Oden J.T., Babuška I., Nobile F., Feng Y., Tempone R., 2005. *Theory and methodology for estimation and control of errors due to modeling, approximation, and uncertainty*, Computer Methods in Applied Mechanics and Engineering, 194:195-204. 2
31. Ladevèze P., Chamoin L., 2011. *On the verification of model reduction methods based on the Proper Generalized Decomposition*, Computer Methods in Applied Mechanics and Engineering, 200:2032-2047. 2
32. Oden J.T., Vemaganti K.S., 2000. *Estimation of Local Modeling Error and Goal-Oriented Adaptive Modeling of Heterogeneous Materials: I. Error Estimates and Adaptive Algorithms*, Journal of Computational Physics, 164(1):22-47. 2
33. Oden J.T., Prudhomme S., 2002. *Estimation of modeling error in computational mechanics*, Journal of Computational Physics, 182:496-515. 2, 5
34. Babuška I., Tempone R., Zouraris G.E., 2004. *Galerkin finite element approximations of stochastic elliptic partial differential equations*, SIAM Journal on Numerical Analysis, 42(2):800-825. 3
35. Robert C.P., Casella G., 2004. *Monte Carlo statistical methods*, Springer (ed.). 3
36. Ghanem R.G., Spanos P.D., 2003. *Stochastic finite elements: a spectral approach*, Courier Dover Publications. 3
37. Bourgeat A., Piatnitski A., 2004. *Approximations of effective coefficients in stochastic homogenization*, Annales de l'Institut Henri Poincaré (B) Probability and Statistics, 40(2):153-165. 4
38. Cottreau R., 2012. *Numerical strategy for the unbiased homogenization of random materials*, Submitted for publication in International Journal for Numerical Methods in Engineering. 4
39. Bauman P.T., Oden J.T., Prudhomme S., 2009. *Adaptive multiscale modeling of polymeric materials with Arlequin coupling and goals algorithms*, Computer Methods in Applied Mechanics and Engineering, 198:799-818. 5
40. Oden J.T., Prudhomme S., 2001. *Goal-oriented error estimation and adaptivity for the finite element method*, Computers & Mathematics with Applications, 41:735-756. 5
41. Ladevèze P., Chamoin L., 2010. *Calculation of strict error bounds for finite element approximations of non-linear pointwise quantities of interest*, International Journal for Numerical Methods in Engineering, 84:1638-1664. 6
42. Software CARl freely available at <https://github.com/cottreau/CARl> 10