



HAL
open science

Detection of archaeological sites hidden by a forest canopy using Sentinel-1 time-series

Florent Michenot, Régis Guinvarc'H, Laetitia Thirion-Lefevre

► **To cite this version:**

Florent Michenot, Régis Guinvarc'H, Laetitia Thirion-Lefevre. Detection of archaeological sites hidden by a forest canopy using Sentinel-1 time-series. Living Planet Symposium, May 2022, Bonn, Germany. 10.13140/RG.2.2.22288.48642 . hal-03771833

HAL Id: hal-03771833

<https://centralesupelec.hal.science/hal-03771833>

Submitted on 7 Sep 2022

HAL is a multi-disciplinary open access archive for the deposit and dissemination of scientific research documents, whether they are published or not. The documents may come from teaching and research institutions in France or abroad, or from public or private research centers.

L'archive ouverte pluridisciplinaire **HAL**, est destinée au dépôt et à la diffusion de documents scientifiques de niveau recherche, publiés ou non, émanant des établissements d'enseignement et de recherche français ou étrangers, des laboratoires publics ou privés.

Introduction

- Airborne Laser Scanning (ALS) effective at discovering new structures on known sites covered in vegetation.
- Costly, use for detecting fully unknown sites discouraged.
 - Requires an additional way to find probable sites location.
- **Objective:** detection of archaeological sites hidden by a forest canopy, through:
 - Temporal speckle filtering
 - Diversity of points of view provided by Sentinel-1



Figure 1: Picture of the Pyramid of the Sun.
© Nateirma



Figure 2: Picture of the High Temple.
© Martin Falbisoner

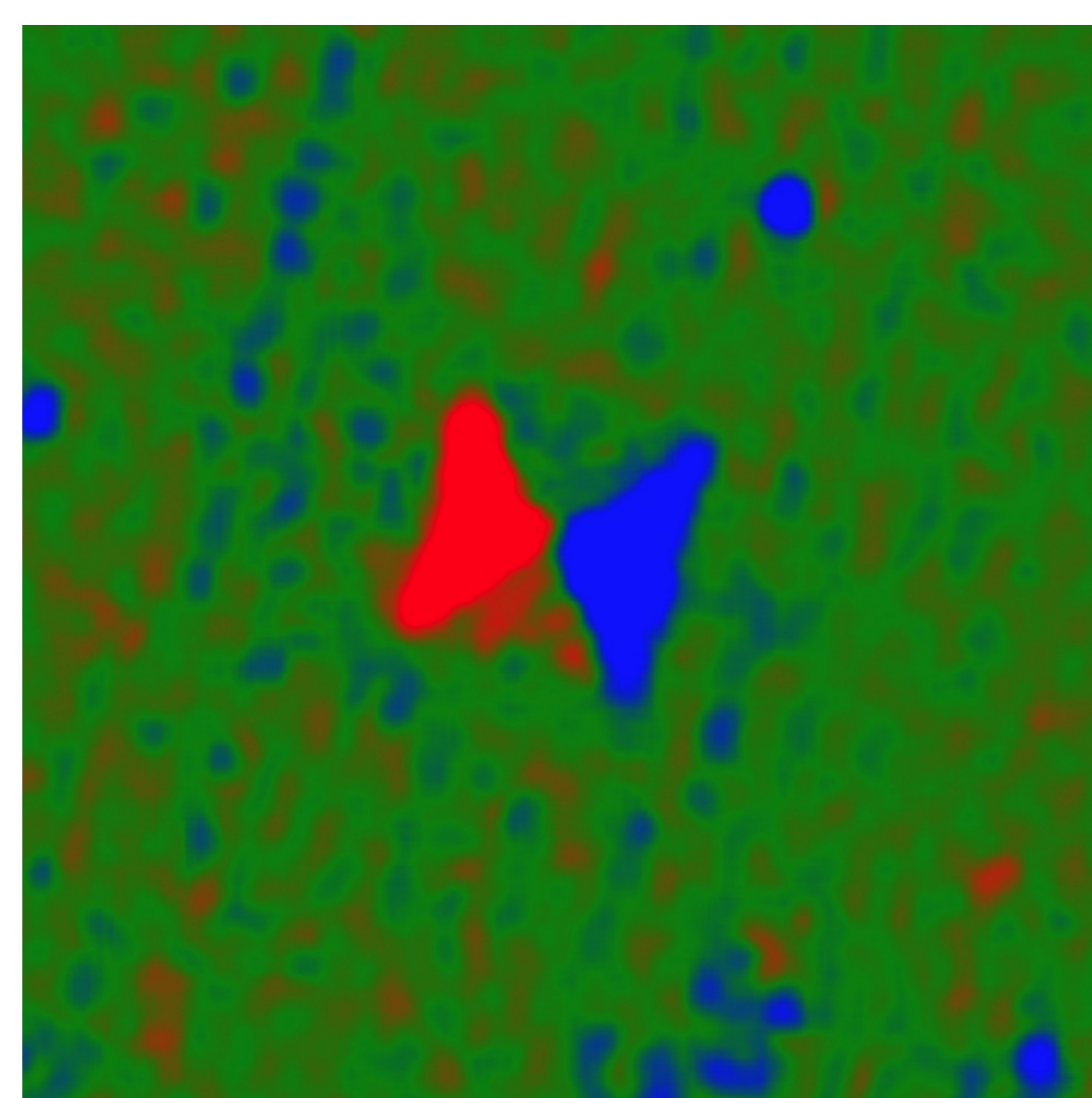


Figure 3: Picture of a jungle. © Simon Burchell

- Arbitrary colormap
- Red is West
- Blue is East
- Green is both
- Flat horizontal areas
- Borders between red and blue spots



a)



b)

Figure 4: a) Optical image of the Pyramid of the Sun [1]. b) Output of the technique over the same area. The red spots represent a higher backscatter from the West (ascending pass), the blue ones a higher backscatter from the East (descending pass) and the green background covers the areas with similar intensity from both directions.

Method

1. Temporal Speckle Filtering

- Spatial speckle filtering degrades spatial resolution [2]
 - Impairs detection of small targets
- Temporal speckle filtering degrades temporal resolution [3]
 - Not an issue, structures don't move
 - Here: Mean of the backscattering σ along time axis for one year of data
 - For every spatial pixel (x, y) , $\sigma(x, y) = \frac{1}{N} \sum_{t=1}^N \sigma(x, y, t)$

2. Ascending / Descending Ratio

- Sentinel-1 satellite: heliosynchronous orbit (fig. 5)
 - Two points of view: Ascending and Descending
- Projection of the images to a common geographical grid
- Ratio of Ascending images over Descending images
 - Highlights East-West dissymmetries
 - $Q\sigma^\circ = \sigma^\circ_{asc} / \sigma^\circ_{des}$ (or in dB: $\Delta\sigma^\circ_{dB} = \sigma^\circ_{asc,dB} - \sigma^\circ_{des,dB}$)
 - Arbitrary colormap
 - Here, red is West, blue is East, green is both.

Process presented in fig. 6 and 7, and applied to an archaeological site surrounded by jungle in the next part.

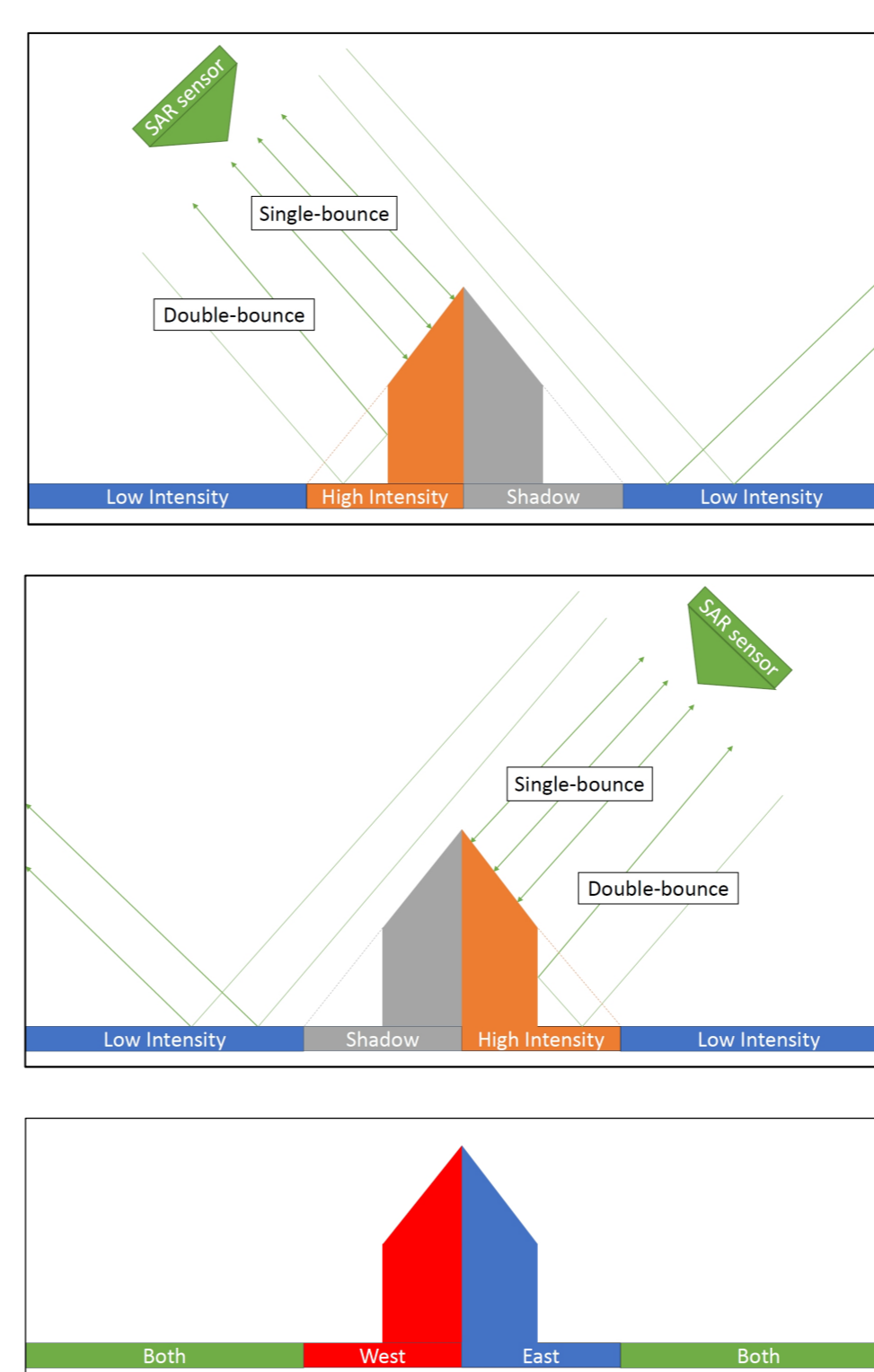


Figure 6: Illustration of the radar scattering mechanisms in play (ascending at the top, descending in the middle) and the ratio image (bottom).

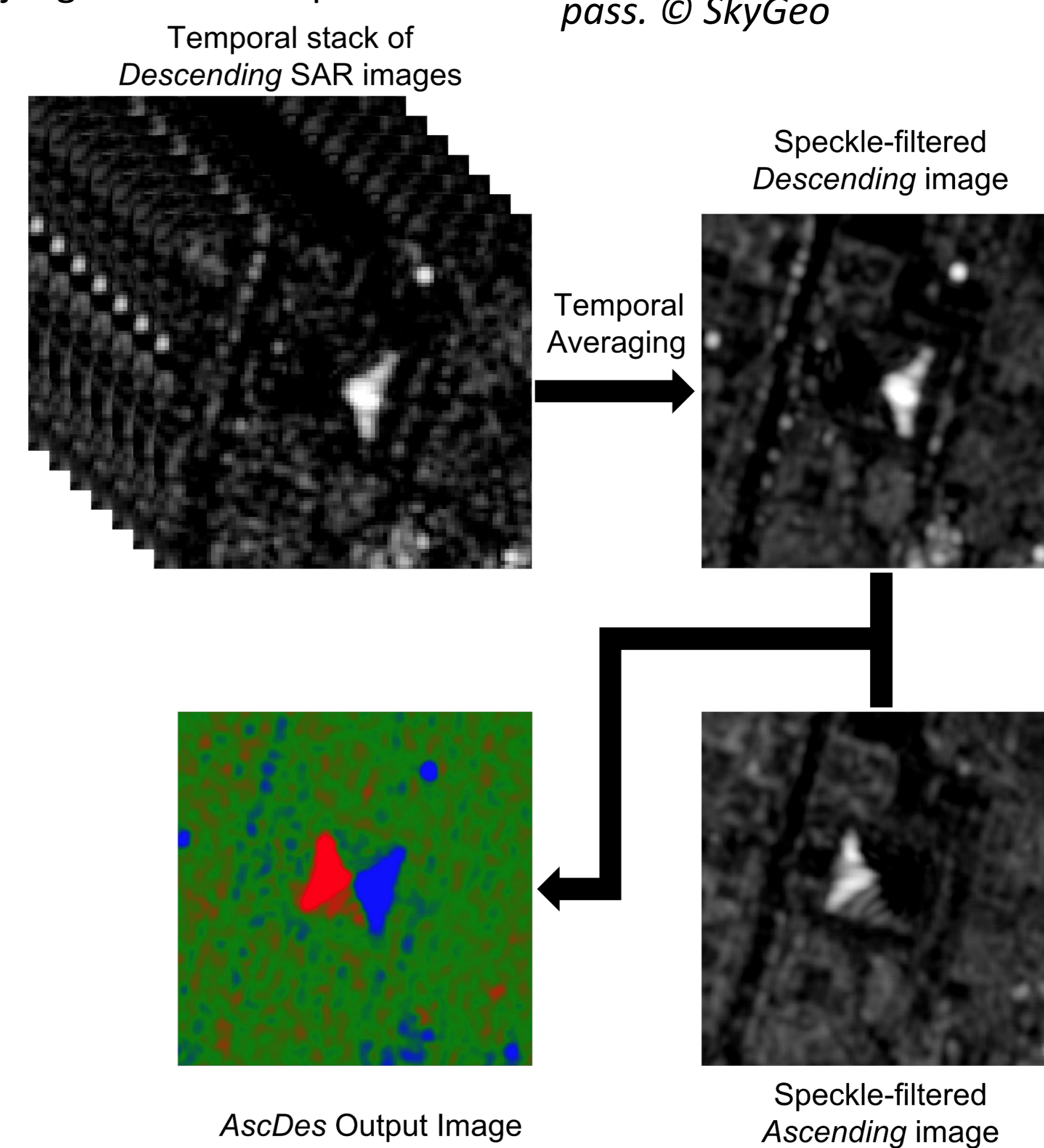


Figure 7: Graph of the process, applied to the Pyramid of the Sun, Teotihuacan, Mexico.

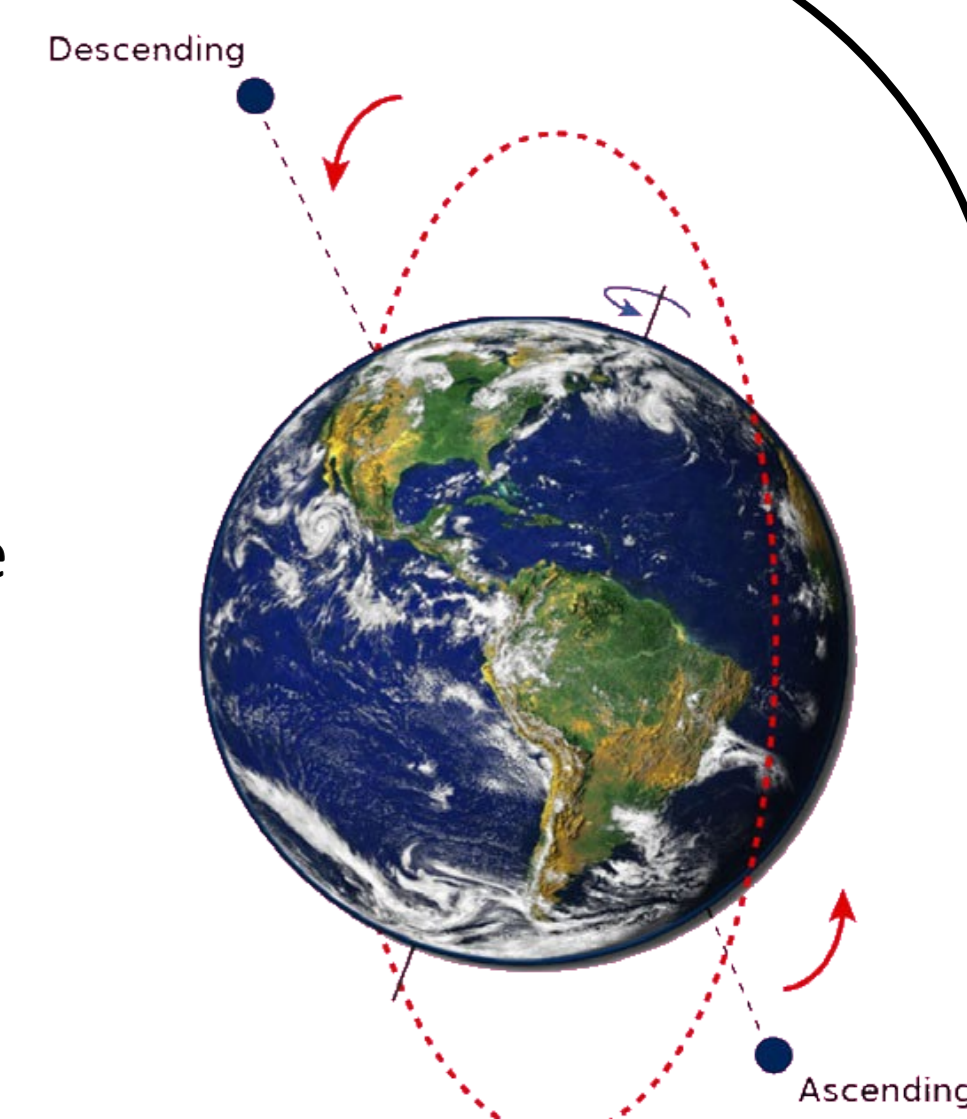


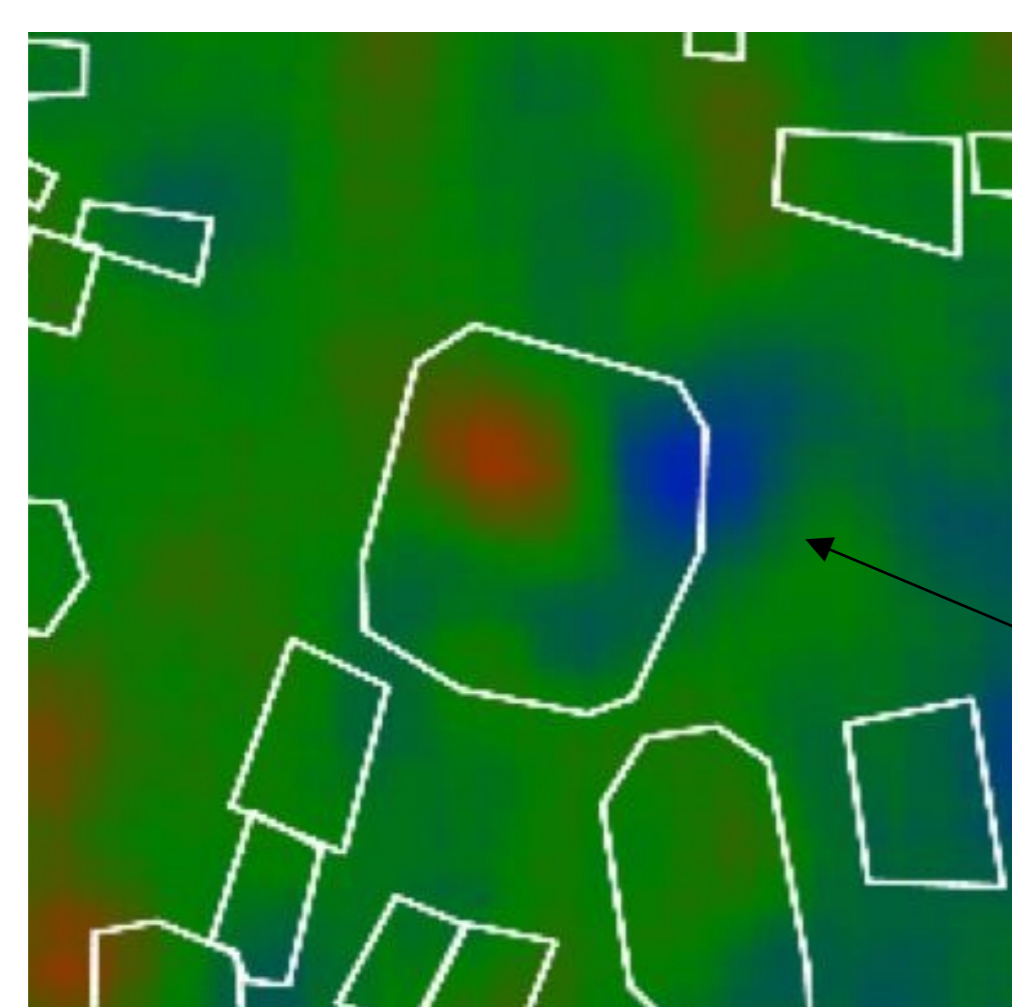
Figure 5: Illustration of the ascending and descending passes. Sentinel-1 is right-looking: it images the scene from the West during the ascending pass, and from the East during the descending pass. © SkyGeo

Application: archaeological site of Lamanai, Belize

- Mayan archaeological site, northern Belize
- Map found in an archaeological article [4]
 - Projected over optical (fig. 8 top) and SAR ratio (fig. 8 bottom)



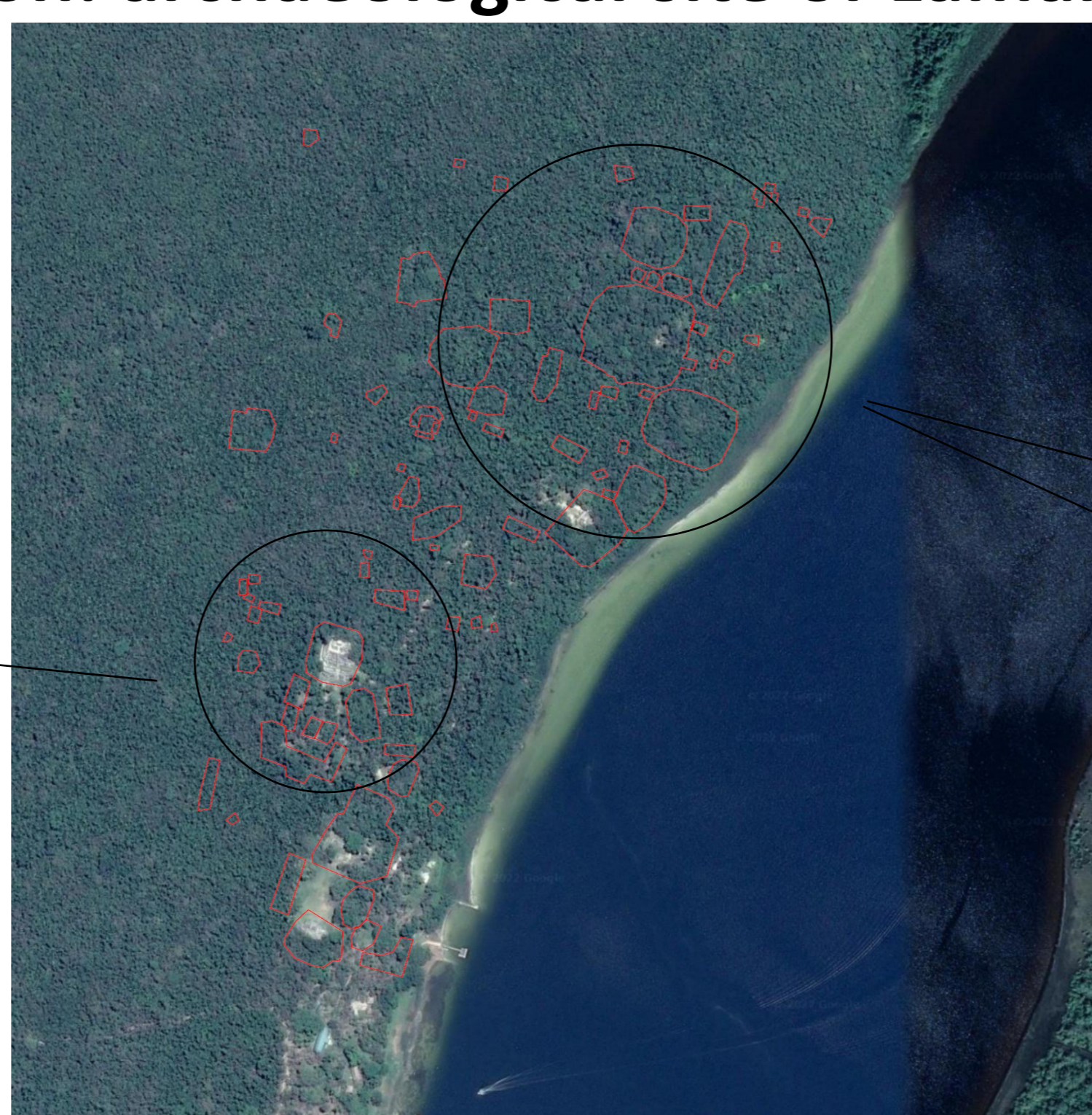
a)



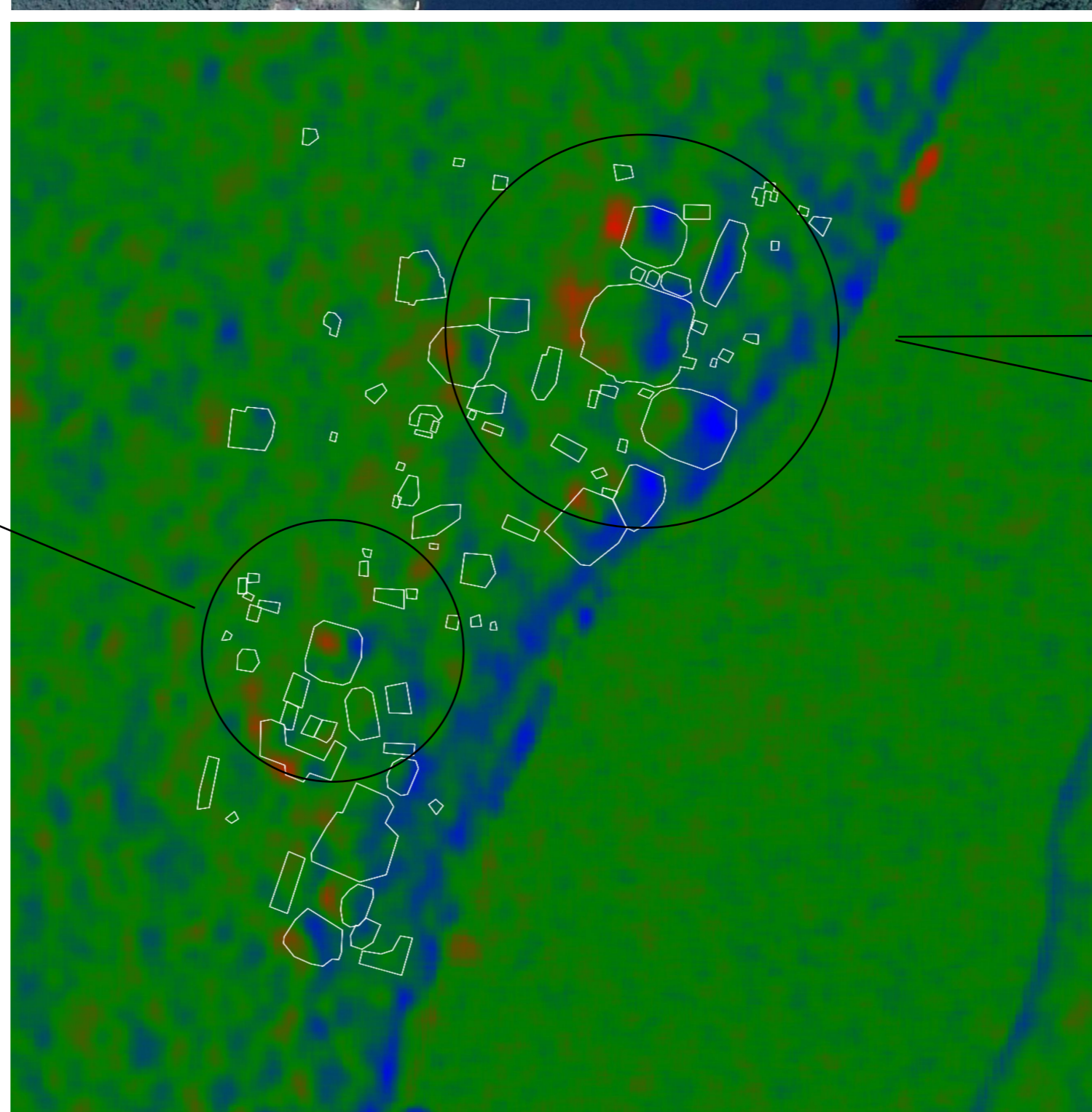
b)

Figure 9: a) Optical image [1] of the High Temple (structure N10-43), with archaeological map overlaid in red. b) Output of the technique over the same area, with the map in white.

Figure 8: a) Optical image [1] of Lamanai, with archaeological map overlaid in red. b) Output of the technique over the same area, with the map in white.

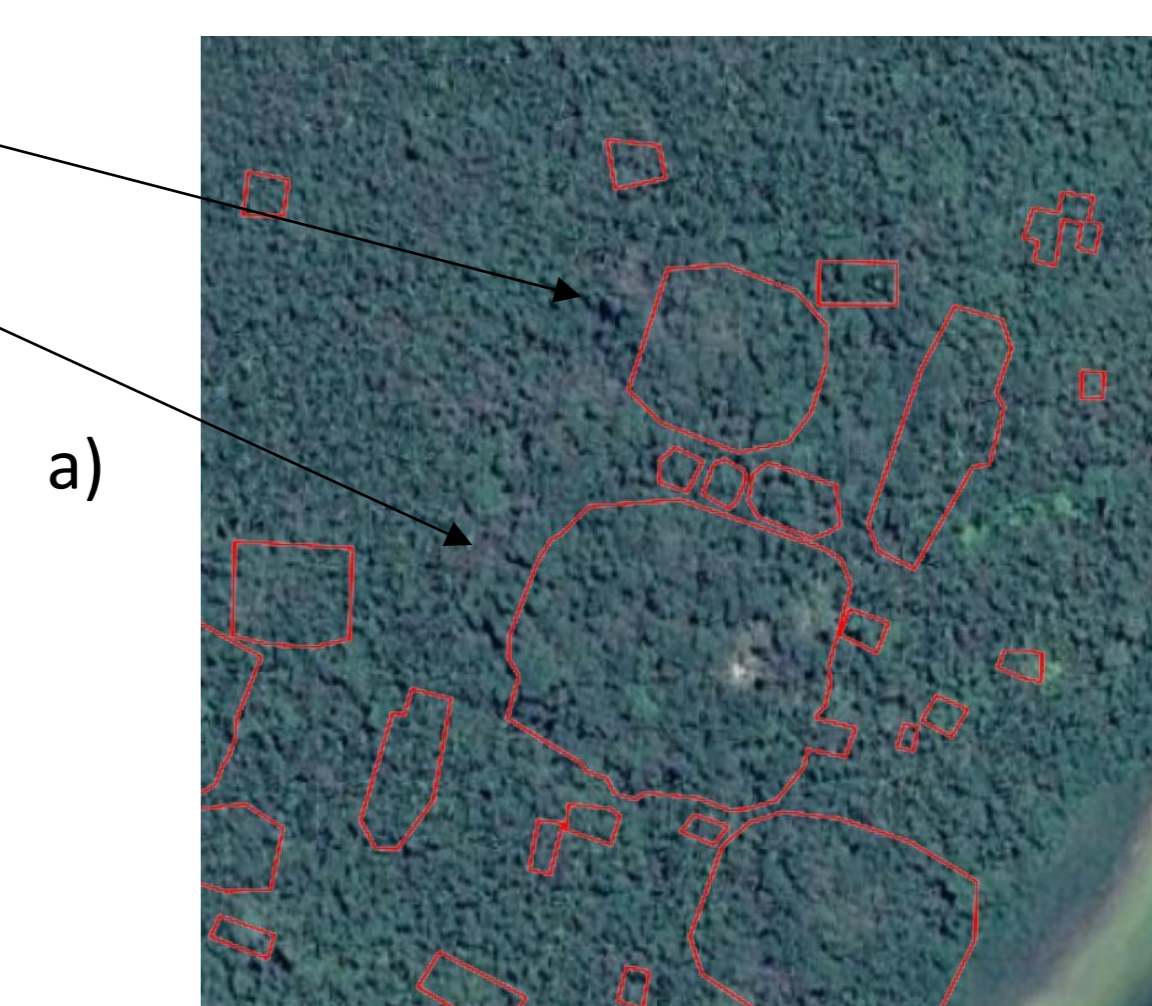


a)

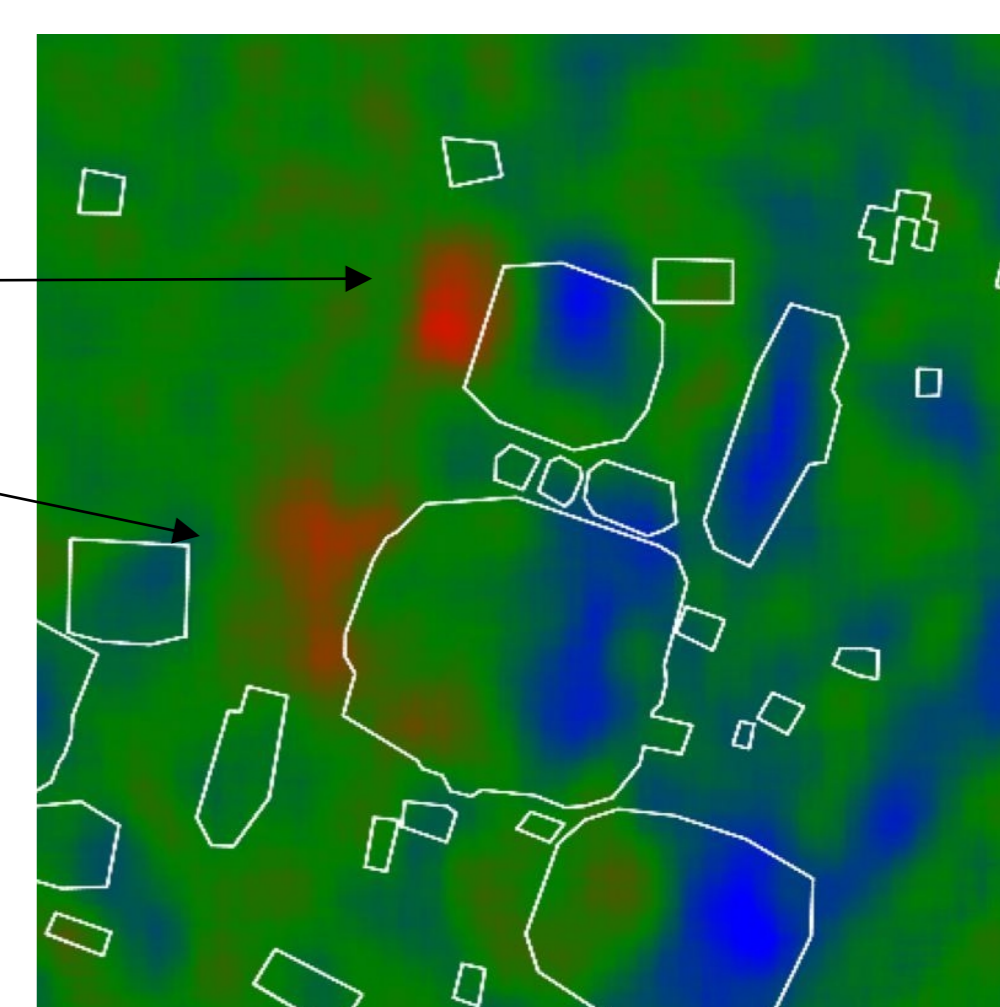


b)

- Focus on three buildings:
 - N10-43 (High Temple, fig. 3 and 9): visible from the sky, cleared of trees, restored
 - P9-25 and P8-1 (fig.10, indicated by arrows, respectively south and north): fully covered by the jungle, typical examples of the application



a)



b)

Figure 10: a) Optical image [1] of the two hidden structures (P9-25 and P8-1), with archaeological map overlaid in red. b) Output of the technique over the same area, with the map in white.

Conclusion

- Free detection of archaeological sites covered by a forest canopy on a global scale
- Reduced risk of wasting an ALS mission or an expedition by foot

References

- [1] CNES/Airbus, Maxar Technologies, 2022
- [2] J. Lee et al. "Speckle filtering of synthetic aperture radar images: A Review". In: Remote Sensing Reviews 8 (Feb. 1994).
- [3] S. Quegan and Jiong Jiong Yu. "Filtering of multichannel SAR images". In: IEEE Transactions on Geoscience and Remote Sensing 39.11 (2001), pp. 2373-2379.
- [4] Pendergast, David M. "Lamanai, Belize: Summary of Excavation Results, 1974-1980." Journal of Field Archaeology, vol. 8, no. 1, 1981, pp. 29-53