



HAL
open science

A spiking neuron implemented in VLSI

Pablo Stoliar, I Akita, O. Schneegans, M Hioki, Marcelo Rozenberg

► **To cite this version:**

Pablo Stoliar, I Akita, O. Schneegans, M Hioki, Marcelo Rozenberg. A spiking neuron implemented in VLSI. *Journal of Physics Communications*, 2022, 6 (2), pp.021001. 10.1088/2399-6528/ac4e2a . hal-03854638

HAL Id: hal-03854638

<https://centralesupelec.hal.science/hal-03854638v1>

Submitted on 15 Nov 2022

HAL is a multi-disciplinary open access archive for the deposit and dissemination of scientific research documents, whether they are published or not. The documents may come from teaching and research institutions in France or abroad, or from public or private research centers.

L'archive ouverte pluridisciplinaire **HAL**, est destinée au dépôt et à la diffusion de documents scientifiques de niveau recherche, publiés ou non, émanant des établissements d'enseignement et de recherche français ou étrangers, des laboratoires publics ou privés.

LETTER • OPEN ACCESS

A spiking neuron implemented in VLSI

To cite this article: P Stolar *et al* 2022 *J. Phys. Commun.* **6** 021001

View the [article online](#) for updates and enhancements.

You may also like

- [Characterization of dynamics and information processing of integrate-and-fire neuron models](#)
JunHyuk Woo, Soon Ho Kim, Kyungreem Han et al.
- [Integration of nanoscale memristor synapses in neuromorphic computing architectures](#)
Giacomo Indiveri, Bernabé Linares-Barranco, Robert Legenstein et al.
- [Comparing offline decoding performance in physiologically defined neuronal classes](#)
Matthew D Best, Kazutaka Takahashi, Aaron J Suminski et al.



LETTER

A spiking neuron implemented in VLSI

OPEN ACCESS

RECEIVED

15 September 2021

REVISED

12 January 2022

ACCEPTED FOR PUBLICATION

24 January 2022

PUBLISHED

3 February 2022

Original content from this work may be used under the terms of the [Creative Commons Attribution 4.0 licence](#).

Any further distribution of this work must maintain attribution to the author(s) and the title of the work, journal citation and DOI.

P Stoliar¹, I Akita¹, O Schneegans², M Hioki¹ and M J Rozenberg³ ¹ National Institute of Advanced Industrial Science and Technology (AIST), 305-8565 Tsukuba, Japan² Laboratoire Génie électrique et électronique de Paris, CentraleSupélec, UMR8507 CNRS -Sorbonne Université, Université Paris-Saclay, 91192 Gif-sur-Yvette Cedex, France³ Université Paris-Saclay, CNRS, Laboratoire de Physique des Solides, Orsay, FranceE-mail: marcelo.rozenberg@universite-paris-saclay.fr**Keywords:** artificial spiking neurons, neural networks, memristor, neuromorphic circuits**Abstract**

A VLSI implementation of a Silicon-Controlled Rectifier (SCR)-based Neuron that has the functionality of the leaky-integrate and fire model (LIF) of spiking neurons is introduced. The silicon-controlled rectifier is not straightforward to efficiently migrate to VLSI. Therefore, we propose a MOS transistor-based circuit that provides the same functionality as the SCR. The results of this work are based on Spice simulation using open libraries and on VLSI layout and post layout simulations for a 65 nm CMOS process.

1. Introduction

We have recently introduced a new artificial spiking neuron circuit implemented by using a few discrete out-of-the-shelf electronic components [1]. The core of this neuron is a silicon-controlled rectifier (SCR), also known as a thyristor. It is a very common component used in power electronics and ESD protection.

This SCR-based neuron circuit already demonstrated the capability of cascading and reproducing many neuronal behaviors of biological relevance [2]. Nevertheless, there is still an open question whether it can be integrated into VLSI circuits. The main issue to migrate the circuit to VLSI is the SCR.

SCRs can be integrated with *ad-hoc* CMOS processes [3, 4]. However, to develop a fully neuromorphic chip, engineers require SCRs to be fully integrated into the design libraries of the main foundries. This would require a significant effort.

Thus, here we take a different approach to the problem. We look for emulating the SCR functionality by using standard MOS transistors. This should improve the appeal of the SCR-based circuit as a competitive option for VLSI implementations of neural networks and generate enough momentum to drive the introduction of SCRs into high-end processes.

Different circuits emulating SCRs functionality were already proposed, each focusing on specific application constraints. For example, Kim *et al* introduced an SCR emulating circuit focusing on linearity [5]. Schell *et al* focused on precise matching between cells [6]. Saft *et al* introduced a circuit using extra transistors to increase the on/off ratio and threshold voltage [7]. Li *et al* focused on the behavior in temperature [8]. Here, we focus on the simplest possible implementation (minimum number of transistors) that seamlessly fit into our neuron circuit.

Park *et al* have recently reported a comprehensive overview of the state of the art when it comes to compact neuron designs [9]. Designs using novel electronic devices in general use less components and are more energy efficient, down to six transistors and 100 pJ/pulse. Both power and transistor count tend to increase when standard CMOS technologies are used. Nevertheless, it should be noted that many novel designs that claim low-component count cannot operate in a full neuromorphic system without the use of additional inter-stage amplifier/buffering circuitry. Here, we are introducing a design implemented with standard VLSI technology, using nine transistors, that is capable to operate as stand alone, and with a power consumption of 100 fJ/pulse.

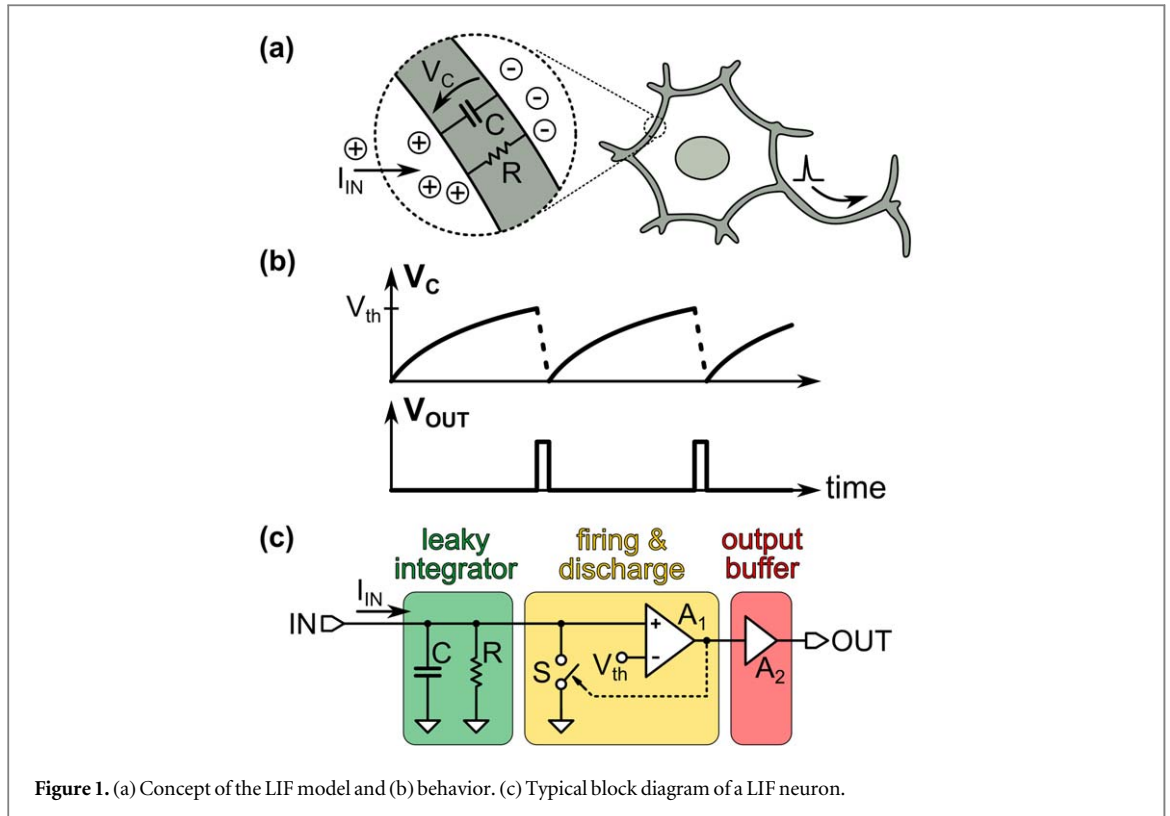


Figure 1. (a) Concept of the LIF model and (b) behavior. (c) Typical block diagram of a LIF neuron.

In previous work, we have identified the key properties of the SCRs that are relevant to our circuits, namely, that its high conduction state can be triggered by a control pin (the gate), and then it remains in that state until the (holding) current is decreased to close to 0, therefore it has hysteresis [1]. Here we demonstrate that the same functionality as the SCR can be implemented with three MOS transistors, and, provide a fully VLSI-compatible circuit.

2. Background

2.1. LIF model

Our SCR-based neuron realizes a leaky-integrate and fire (LIF) neuron. The LIF model is a basic, yet powerful, model of a neuron behavior [1, 2, 10]. Figures 1(a) and (b) depicts the basic concept behind the LIF model. Signals arrive from pre-neurons in the form of ionic currents. The neuron membrane behaves like a leaky capacitor (C with a leak resistor R in parallel). It accumulates these ions, building up the membrane potential V_C . This is the leaky-integration, LI.

If the membrane potential V_C reaches a threshold voltage V_{TH} , the LIF model predicts the firing of a spike. The idea is that at the threshold the membrane channels suddenly open (not shown), and the ionic charges compensate. Therefore, the accumulated charge rapidly discharges, the neuron generates an output signal, and the integration starts over again.

Notice that in this work we are dealing with many parameters that specify threshold voltages; we use V_{TH} for the threshold of the LIF behavior (figure 1), V_{BF} for the voltage threshold of the SCRs, and, $V_{TH1} \dots V_{TH6}$ for the threshold of the MOSFETs.

For the sake of clarity, in most discussions below we shall neglect second-order or parasitic effects such as, for example, gate leak in MOS transistors (nevertheless they are considered in all the numerical results). For the simulations presented in sections 2–4, we use the software LTspice [11]. The short channel models for the VLSI transistor are reported in [12].

A basic implementation of the LIF model is presented in figure 1(c). We assume an input current that in general is variable in time. This current is integrated by the capacitor C , while the leaky resistor R slowly discharges it. The voltage in C is continuously monitored by the amplifier A_1 . When it reaches a threshold V_{TH} , the neuron ‘fires’. An output pulse is generated, and, the capacitor is rapidly discharged through the closed switch S . Then, the output buffer amplifies the fire signal so that it can be transmitted to the following neurons.

There is plenty of circuits of LIF neurons, some implementing variations of the basic model we just described [13]. Moreover, there is plenty of VLSI implementations [14–16] and references therein. The key issue is that

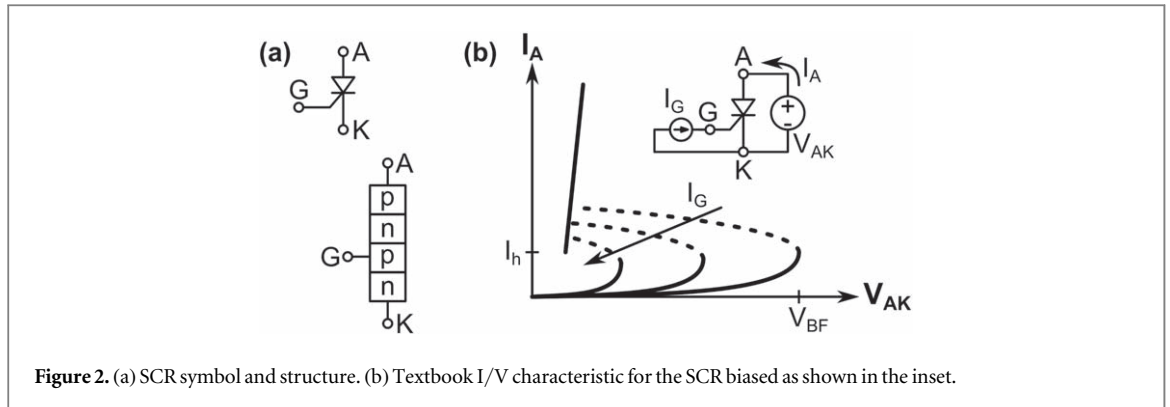


Figure 2. (a) SCR symbol and structure. (b) Textbook I/V characteristic for the SCR biased as shown in the inset.

neuromorphic systems require a huge number of artificial neurons. Therefore, there is always a difficult trade-off between size, power consumption, and fidelity in reproducing neural behavior [17, 18].

2.2. Silicon-controlled rectifier

The central component in our neuron is a silicon-controlled rectifier, which we describe next. Figure 2(a) presents the symbol and structure of an SCR. They are four-layer devices [19], that are standard in power electronics; they typically handle tens of amperes and hundreds of volts.

Figure 2(b) presents the schematic current-voltage characteristics (I_A versus V_{AK}) for increasing I_G [19]. Starting from $V_{AK} = 0$, the SCR blocks the I_A current until V_{AK} reaches the switching voltage V_{BF} . At this point, the SCR turns on, and I_A rapidly increases with V_{AK} (i.e., high conduction state). The SCR remains in this high conduction state until I_A decreases below a holding current I_h . The SCR can also be triggered by I_G . Indeed, gate and cathode form a *pn* junction similar to a diode. When V_{GK} reaches ~ 0.6 V, I_G flows, and the SCR fires.

2.3. SCR-based neuron

Figure 3(a) presents the SCR-based circuit as reported in [1]. We have, similarly to figure 1(a), the three basic blocks for a LIF neuron, namely, the ‘leaky integrator’ block, the ‘firing & discharge’ block, and the output buffer, plus, an additional subcircuit block to detect firing.

In the SCR-based circuit [1], the implementation of the ‘leaky-integrator’ and the ‘output buffer’ blocks are conventional and straightforward. However, the key aspect of that work that is relevant to us now is that the core of the ‘firing and discharge’ circuit is a SCR triggered by the gate. This feature is illustrated for reference in the simulation data of figure 3.

Figures 3(b)–(d) presents a simulation of the SCR-based circuit for a constant input current of 2 mA. The input current is integrated by C_1 , making V_A to increase until it reaches ~ 5 V (figure 3(b)). At that point, the voltage at the SCR gate reaches a threshold value $V_{GK} \sim 0.6$ V, and firing occurs (figure 3(c)).

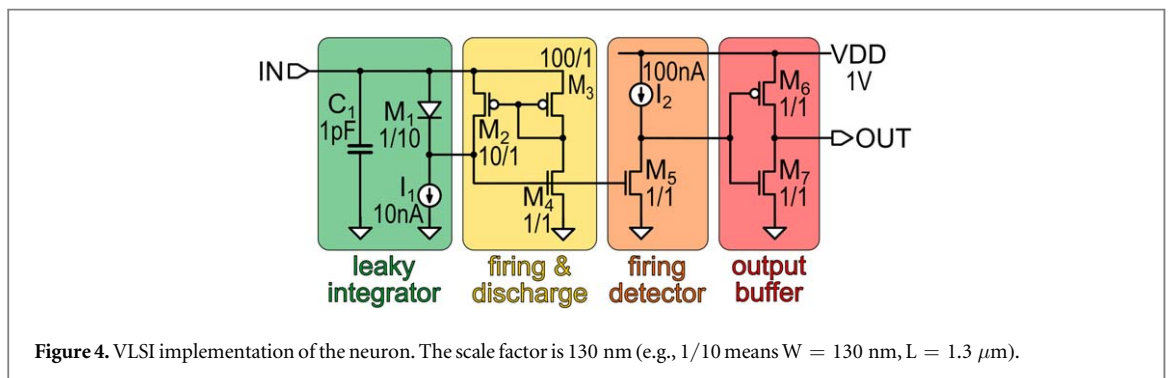
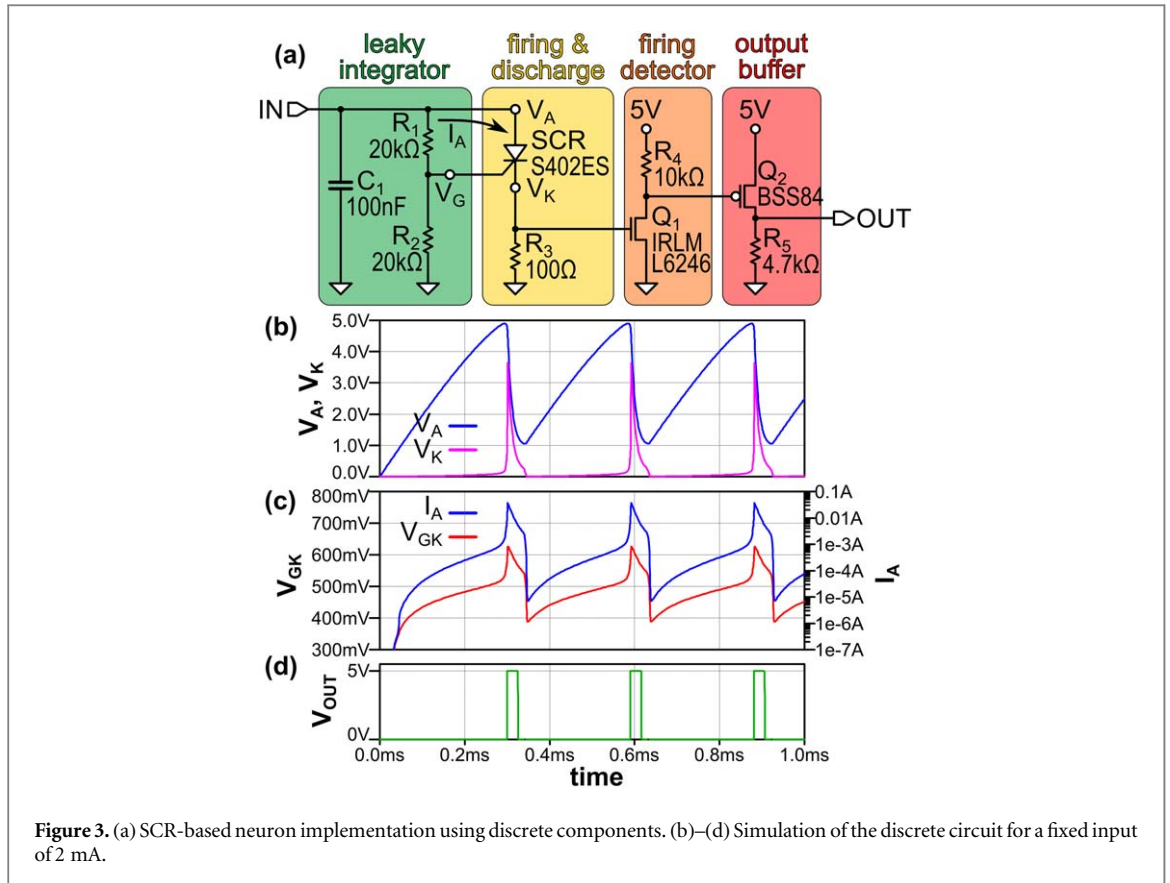
We should point out here that the value of 2 mA adopted for the input current is orders of magnitude larger than the corresponding used in the VLSI implementation that we shall describe later on. In fact, the replacement of one circuit by the other only concerns their qualitative function and not the actual magnitudes of the electric parameters.

The firing sets the SCR in high conduction state. I_A jumps to ~ 50 mA, limited by R_3 . The charge in C_1 starts to discharge in R_3 with a fast time constant with respect to the charge (notice that $R_3 \ll R_1 + R_2$). The high conduction state remains until I_A drops below the holding current $I_h = 2$ mA. The circuit thus resets and then the integration starts over again. We finally point out that at the beginning of the discharge, V_K exceeds the threshold voltage of Q_1 (~ 1 V), turning Q_1 and Q_2 on, and generating an output pulse (figure 3(d)).

3. Replacing sub-circuits

Our strategy to convert the circuit in figure 3(a) into the VLSI circuit in figure 4, is to rethink the implementation of each block separately. We shall consider first the most important ‘firing and discharge’ block, which involves the main issue that we address in this work, namely the VLSI replacement of the SCR. Therefore, we provide next a brief description of the implementation of the neuron using discrete components.

From a general perspective, the SCR is a device that realizes an instance of S-type negative differential resistance (S-NDR). In an early work in 1985, Chua *et al* proposed a catalog of circuits to implement S-NDR by using bipolar and field-effect transistors, and resistors [20]. However, implementations relying solely on three



enhancement-mode short-channel MOSFETs are still missing. Below, we shall describe how to obtain such an implementation.

3.1. Firing and discharge sub-circuit

The 4-layer structure of the SCR (figure 2(a)) can be interpreted as two 3-layer structures (figure 5(a)), leading to the well-known 2-bipolar transistor analogy of the SCR (figure 5(b)) with an *npn* and a *pnp* components. These bipolar transistors cannot be simultaneously replaced by MOS transistors. Still, revisiting this 2-transistor equivalent circuit is useful for our goal.

We assume a positive bias V_{AK} , say $V_{AK} > 1$ V, and $V_S = 0$ (figure 5(b)). Both transistors are off. We now start increasing V_S , leading to I_G eventually flowing into the base of T_2 . I_G gets amplified to $I_{C2} = \beta_2 I_{B2}$, where β_2 is the current gain of T_2 . We see that T_2 is a current amplifier (see below).

I_{C2} flows into the base of T_1 and gets amplified as $I_{C1} = \beta_1 I_{B1}$. Now, I_{C1} adds up to I_G ; we have a runaway condition where the current of both transistors continuously increases.

Notice that r_S should be relatively high compared to the dynamical input resistance of T_2 . For example, if r_S is zero, I_{C1} would not add-up to increase the current into T_2 because V_{G2} is fixed to V_S .

We do not expect a very high effective β for the T_1 when the transistors enter in this runaway condition (i.e., the current gain, β , of bipolar transistors depends on the collector current. β remains almost constant for

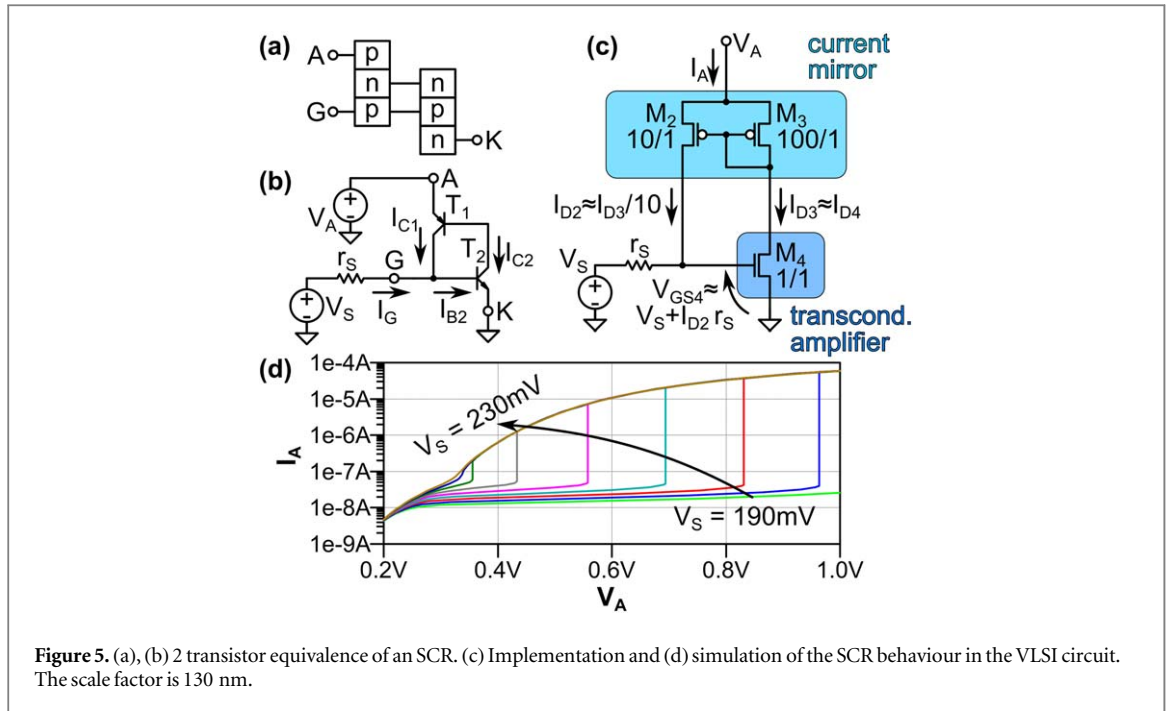


Figure 5. (a), (b) 2 transistor equivalence of an SCR. (c) Implementation and (d) simulation of the SCR behaviour in the VLSI circuit. The scale factor is 130 nm.

nominal currents, nevertheless, for relatively high collector currents it drops as $I_{C1} \sim I_{B1}$ [21]). We can think of T_1 behaving like a loose current mirror circuit [21].

At this point, even if we turn V_S off, both transistors remain in a high conduction state. To turn the transistors off, we should force I_{C1} and I_{C2} to drop down close to zero, hence equivalent to going below I_h in an SCR. We also see that the gate node is a current summing point, $I_{B2} = I_{C1} + I_G$.

We have just dissected the SCR into (i) a current amplifier, (ii) a current mirror, and (iii) a current summing point.

This sets the stage for the introduction of our VLSI equivalence of the SCR that is presented in figure 5(c).

As before, we first assume $V_S = 0$ and all transistors (M_2 – M_4) are off. As V_S approaches V_{TH4} , the current I_{D4} becomes significant. Initially, the voltage across r_S is 0 because no current flows. M_2 and M_3 are a current mirror with ratio 1/10 since the area ratio of both transistors is 10 (we shall describe the determination of such a ratio value later in section 4). Thus, I_{D4} flows out of the drain of M_3 and, therefore, M_2 injects a current $I_{D2} = I_{D3} / 10 = I_{D4} / 10$ into r_S . The voltage drop on r_S adds to V_S to increase the value of V_{GS4} , so I_{D4} increases further too (i.e., the current flowing through the source–drain of M_4). Hence, I_{D3} and I_{D2} further increase as well. We have, similarly as before, a runaway condition.

Importantly, notice that at this point, even if V_S is turned off, $I_{D2} r_S > V_{TH4}$. To turn off the circuit, we should decrease the currents until V_{GS4} goes well below V_{TH4} . Therefore, we also realized the current holding property, which provides the hysteresis behavior that is a key feature of the SCR.

In figure 5(d) we may observe that our qualitative discussion is indeed realized in the simulated I–V characteristic of the circuit in figure 5(c). A sharp threshold is observed for V_A depending on $V_S = 190$ mV... 230 mV. We shall see later in section 4 that for the final optimized circuit I_A jumps from <100 nA to >1 μ A when firing occurs, at $V_A \sim 0.6$ V.

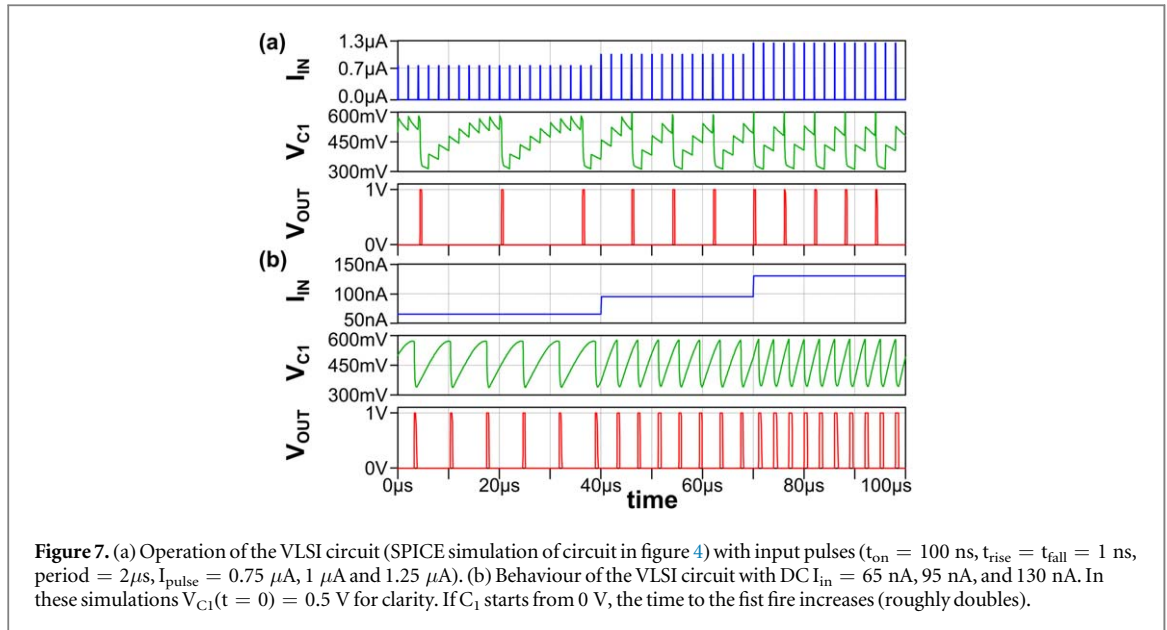
3.2. Firing detector

The VLSI ‘firing detection’ circuit (see figure 4) is conceptually different from the one used in the SCR-based circuit (figure 3(a)).

M_4 and M_5 (respectively in yellow and orange blocks of figure 4) are equal and share the same V_{GS} . Therefore, $I_{D5} \approx I_{D4}$.

From the optimized circuit data that we shall discuss later on (cf figure 6(b) red curve [$W/L_3 = 100$]), the current source of the firing detector block may be conveniently chosen at the intermediate $I_2 = 100$ nA, which lays between the off-current ~ 5 – 50 nA and the discharge current ~ 0.2 – 10 mAmp. Thus, before firing the voltage at the gate of M_4 and M_5 is low and $I_{D5} \approx I_{D4} < 100$ nA. Hence, the current source I_2 is in compliance. The output of the firing circuit block (drain of M_5) is in a high state ($\sim V_{DD}$) and V_{OUT} is at $\sim GND$ (see below).

When firing occurs, $C1$ gets discharged mainly through the channels of M_3 and M_4 , as a high voltage is now present at the gates of M_4 and M_5 , this would lead to large currents $I_{D5} \approx I_{D4}$. As I_{D5} would greatly exceed the set



4.2. Simulations

Figure 7 presents simulation results of the VLSI circuit upon application of the two paradigmatic types of excitation inputs: train of pulses and DC current.

The analysis for input pulses (figure 7(a)) is interesting because we can see the leaky integration. The initial train of pulses have an amplitude of 750 nA. We observe that for our choice of parameters, 8 pulses with a frequency of 500 kHz are required to fire the neuron. The capacitor voltage increases ~ 75 mV per pulse, and it decays between pulses because of the leaky term.

As expected for a LIF neuron, when the amplitude of the pulses is increased, the number of pulses required for it to fire decreases. As seen in the figure, the circuit requires 4 pulses of $1\mu\text{A}$, and, 3 pulses of $1.25\mu\text{A}$ to reach the threshold.

The analysis for the case of DC input (figure 7(b)) is particularly important for our LIF neuron because it might evidence a potential issue. Specifically, one could worry that if the input current I_{IN} is set higher than the holding current, the circuit might never recover from the firing condition.

From the data of panel (b), we see that this issue does not arise. In fact, from the results of figure 6(b) and the choice $[W/L]_3 = 100$, we established that the holding current is ~ 200 nA, so we just need to remain beneath that threshold. Thus, for an input of 65 nA the capacitor charges until the threshold voltage 0.57 V, and then, the circuit starts to fire. A train of output pulses is generated as the capacitor discharges down to 0.34 V during each fire event. The output frequency reaches 140 kHz. Moreover, increasing the amplitude of the input, the output frequency increases as expected for LIF behavior. It reaches a value of 260 kHz for an input current of 95 nA, and 330 kHz for 130 nA.

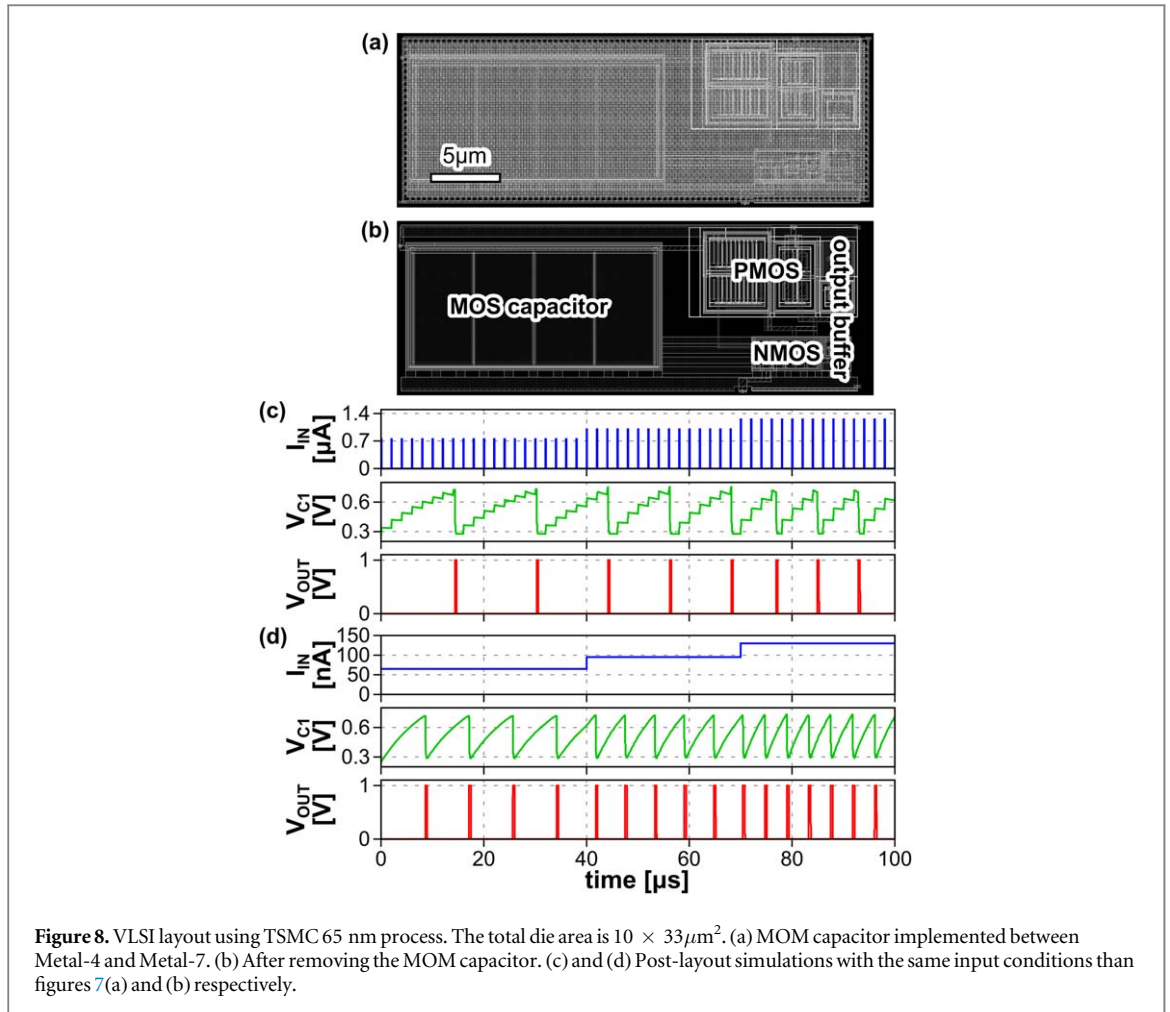
Generally, silicon neurons operate at frequencies much higher than biological ones (\sim kHz), which allows fast neuromorphic computation.

4.3. Stability/limits/performance

In figure 7(b) we observe that V_{C1} oscillates between a resting potential $V_{REST} = 340$ mV and $V_{TH} = 757$ mV. We studied the stability of these two parameters with respect to temperature and change in V_{DD} . The temperature drift of V_{REST} is -0.17 mV $^{\circ}\text{C}^{-1}$ ($<7\%$ in the range $-25 \sim 125$ $^{\circ}\text{C}$), but V_{TH} drift is -0.74 mV $^{\circ}\text{C}^{-1}$, getting as low as 0.5 V for 125 $^{\circ}\text{C}$. The sensitivity to V_{DD} is 32 mV V^{-1} for V_{REST} and 5.6 mV V^{-1} for V_{TH} (both shift $<10\%$ in the range $0.8 \sim 1.2$ V).

The operating frequency is set by C_1 and I_{IN} . There is no upper limit for C_1 nor lower limit for I_{IN} . The minimum C_1 is 10 fF and I_{IN} max is 140 nA, resulting in a max frequency of ~ 1 Mhz. The I_{IN} limit can be extended by reducing W_1 and increasing I_2 .

We estimated the power consumption by connecting the input to a 1 V source with a 7 M Ω resistor and loading it with another 7 M Ω resistor to $(V_{REST} + V_{TH})/2$. The 7 M Ω resistors simulate pre- and post-synapses. The energy drawn from V_{DD} was 100 fJ/pulse at 1 MHz ($C_1 = 0.1$ pF).



5. Post-layout simulations

Figure 8 shows the VLSI layout and post layout simulation results where TSMC 65 nm CMOS process is assumed. As shown in figure 8(a), a part of the 1 pF capacitor, in figure 4, is implemented by metal-oxide-metal (MOM) capacitor of 610 fF which consists of metals from fourth to seventh layers. The rest 390 fF is realized by MOS capacitor as shown in figure 8(b). This hybrid implementation of C1 enables to save die area. The current sources in figure 4 are implemented with transistors of a longer channel length of 500 nm to relax short-channel effect, and these are included in the layout. The designed VLSI circuit occupies $33 \mu\text{m} \times 10 \mu\text{m}$.

It is not a surprise that the C1 takes most of the area since the miniaturization of the ‘membrane’ capacitor remains an issue for all VLSI implementations of spiking neuron circuits.

The post-layout simulation results are shown in figures 8(c) and (d), where the parasitic capacitors and resistors are extracted and applied. In these simulations, input conditions are the same as those in figures 7(a) and (b), respectively, and we can observe the same qualitative results as in the LTspice simulations reported in figure 7.

6. Conclusions

In conclusion, we have introduced a VLSI implementation of our SCR-based neuron circuit, which is a realization of the leaky-integrate-and-fire (LIF) neural model. The original circuit was based on discrete components and was built around the concept of the memristive behavior of a silicon-controlled rectifier (SCR). A main part of the present work was therefore devoted to implementing the functionality of an SCR in VLSI technology. This goal was achieved using a three MOS transistor circuit within 130 nm technology simulated with openly available LTSpice simulation models. We also present post-layout simulation of the circuit designed by using TSMC 65 nm CMOS process, with a total area of $330 \mu\text{m}^2$. This may motivate large scale implementations of artificial intelligence circuits of unprecedented simplicity.

Acknowledgments

This work was partially conducted within the framework of the AIST-CNRS-CentraleSupélec Joint Research Agreement ‘Bioinspired electronic systems’. MJR acknowledges support from the French ANR project ‘MoMA’ ANR-19-CE30-0020. Author contributions: PS, OS, and MJR designed the architecture of the circuit in figure 4, obtained the results presented in section 4, and wrote the manuscript (except section 5). PS, IA and MH adjusted the circuit to VLSI standars. IA did the CMOS implementation in TSMC 65 nm CMOS process and obtained the results presented in section 5 and wrote that section. All the authors contributed to the final revision of the manuscript and discussion of the results.

Data availability statement

The data that support the findings of this study are available upon reasonable request from the authors.

ORCID iDs

M J Rozenberg  <https://orcid.org/0000-0001-9161-0370>

References

- [1] Rozenberg M J, Schneegans O and Stoliar P 2019 *Scientific Reports* **9** 1
- [2] Stoliar P, Schneegans O and Rozenberg M J 2020 *Frontiers in Neuroscience* **14** 421
- [3] Tong X, Wu H, Liang Q, Zhong H, Zhu H, Chen D and Ye T 2012 *Proc. of the SISPAD (Denver, CO)* 316
- [4] Ker M D and Hsu K C 2005 *IEEE Trans. Device Mater. Reliabil.* **5** 235
- [5] Kim G, Kim M K, Chang B S and Kim W 1996 *IEEE J. Solid-State Circuits* **31** 966
- [6] Schell B and Tsividis Y 2008 *IEEE J. Solid-State Circuits* **43** 1227
- [7] Saft B, Schafer E, Jager A, Rolapp A and Hennig E 2014 *European Solid-State Circuits Conf. (ESSCIRC), ESSCIRC 2014- 40th (Piscataway, NJ)* (IEEE) 123–6
- [8] Li J, Lin Y, Ye S, Wu K, Ning N and Yu Q 2020 *Micromachines* **11** 124
- [9] Park Y-S, Woo S, Lim D, Cho K and Kim S 2021 *Front. Neurosci.* **15** 309
- [10] Abbott L F 1999 *Brain Res. Bull.* **50** 303
- [11] LTspice® 2020 Analog Devices Inc., USA. (Freeware) Available: (www.analog.com/en/design-center.html)
- [12] Zhao W and Cao Y 2006 *IEEE Transactions on Electron Devices* **53** 2816
- [13] Indiveri G *et al* 2011 *Front. Neurosci.* **5** 73
- [14] Chicca E, Stefanini F, Bartolozzi C and Indiveri G 2014 *Proc. of the IEEE* **102** 1367
- [15] Joubert A, Belhadj B and Héliot R 2011 *9th Int. New Circuits and Systems Conf. (Piscataway, NJ)* (IEEE) 9–12
- [16] Kornijuk V, Lim H, Seok J Y, Kim G, Kim S K, Kim I, Choi B J and Jeong D S 2016 *Front. Neurosci.* **10** 212
- [17] Izhikevich E M 2004 *IEEE Transactions on Neural Networks* **15** 1063
- [18] Markram H 2006 *Nat. Rev. Neurosci.* **7** 153
- [19] Sze S M and Ng K K 2006 *Physics of Semiconductor Devices* 3rd edn (New York: Wiley)
- [20] Chua L O, Yu J and Yu Y 1985 *IEEE Trans. Circuits Syst.* **32** 46
- [21] Gray P R, Hurst P, Meyer R G and Lewis S 2001 *Analysis and Design of Analog Integrated Circuits* (New York: Wiley)
- [22] Baker R J 2008 *CMOS: Circuit Design, Layout, and Simulation* 2nd edn (New York: Wiley)